



KHYBER PAKHTUNKHWA MEDICAL & DENTAL COLLEGES



Prospectus
2018-19

0333-
9198363

Shahan

**DEPARTMENT OF HEALTH
GOVERNMENT OF KHYBER PAKHTUNKHWA**

0321-9023844





**KHYBER PAKHTUNKHWA
MEDICAL / DENTAL COLLEGES**

PROSPECTUS
2018 - 19

DEPARTMENT OF HEALTH
Government of Khyber Pakhtunkhwa

CONTENTS

1. Introduction to Medical/Dental Colleges.....	05
2. Admission Policy	21
i. Important Notes	22
ii. Seats Distribution.....	24
iii. Eligibility for Seats.....	27
iv. Qualifications and other criteria for admission	32
v. Documents required with application form.....	33
vi. Selection and Admission.....	35
vii. Tuition Fee Structure.....	37
3. College Administration.....	38
4. Academics.....	39
a. Course of Studies for MBBS	39
b. Course of Studies for BDS	41
c. Examinations	42
5. Eligibility and Rules for Examination	45
6. MBBS Examination	46
7. BDS Examination	49
8. Fee and other Subscription	51
9. Rules Regarding Payment of Fees/Fine for MBBS/BDS Students	56
10. Rules and Regulations for students at college	57
11. Hostel Rules and Regulations	60
12. Undertaking/Agreement	64
13. Authority Letter	68
14. Disability Certificate (Specimen)	69
15. Certificate of Location of Educational Institutes (specimen).....	70
16. Certificate of Non-Existence of Educational Institutes.....	71
17. Proforma for Migration.....	72

SAS

INTRODUCTION

TO THE

MEDICAL & DENTAL

COLLEGES

KHYBER PAKHTUNKHWA

KHYBER MEDICAL COLLEGE, PESHAWAR



Khyber Medical College, which is situated at the doorstep of historical Khyber Pass, was established in 1954. The College started functioning in 1955 with enrolment of fifty students with meager facilities.

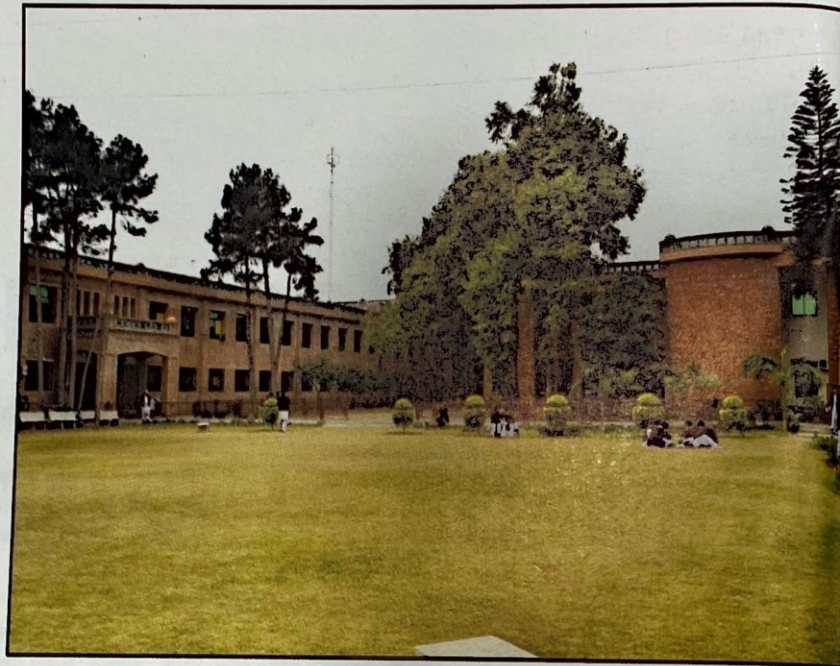
Ever since the college has undergone tremendous development and has become an excellent seat of learning and motivation, recognized all over the world.

Khyber Medical College is a pioneer institution in Khyber Pakhtunkhwa in medical education and has been rightly called the mother Institution of all the Medical/Dental Institutions established in Khyber Pakhtunkhwa. It has created name for itself at national and international level by dedicated work of its staff and students.

The graduates of Khyber Medical College, numbering over 9000, are providing health care, not only in Khyber Pakhtunkhwa and FATA, but also in rest of the country. In addition, its graduates are holding key positions both at home and abroad.

Beside undergraduate medical education, the college offers teaching and research facilities to the postgraduate students, i.e., M. Phil, in all Basic Medical Sciences, FCPS in Clinical as well as Basic Medical Sciences, and minor diplomas in many specialties.

The college is affiliated with Khyber Medical University and is recognized by PMDC, General Medical Council of UK, Ireland and licensing authority of USA.



Khyber Teaching Hospital, established in 1976, is attached to the college for teaching/training purposes. It is a 1200-bedded hospital, which maintains high standards with highly qualified medical staff and sophisticated equipment's.

Adjacent to the college are Khyber College of Dentistry and Institute of Radiotherapy and Nuclear Medicine (IRNUM), providing training facilities to the students of Khyber Medical College in these disciplines.

The Pakistan Medial Research Council (PMRC) has established a research center within the college premises. It is a well-equipped center where research facilities are provided in all disciplines of medical sciences.

The college has a Medical Education Department in which workshops, symposia and seminars are regularly conducted for the faculty members and students.

An I.T based 'Self Learning Resource Center' has been setup within the college which is equipped with latest computers that provides internet facility to the staff and students thus facilitating self-study and research. A wireless network system has been established in the college and a wireless bridging between the college hospital and student hostels has been completed. In plans, are establishment of I.T. Department for office automation, digital library, tele and video conferencing facilities and ultimately paperless technology system for the college.

The College has established Clinical Skill Centre for regular training of all students in BCLS and ACLS skills.

A scientific journal is a symbol of recognition of academic activities and research conducted in an institution. Khyber Medical College has been regularly publishing its own scientific journal known as "Journal of Medical Sciences". The research articles are mostly contributed by the faculty of Khyber Medical College.

The college has well-established library consisting of three portions, i.e., a lending part for students, a reference part for teachers and a part containing periodicals. The library is well furnished, air-conditioned and offers large collection of books and periodicals to meet the

teachers and students requirements.

Separate hostels for boys and girls are situated within the premises of Peshawar University.

The students of Khyber Medical College over the years distinguished their Alma Mater not only by extending selfless services to ailing humanity with devotion and dedication, acquiring higher and specialized knowledge in various disciplines of medicine, but also by actively participating in co-curricular and extracurricular activities. The Social Welfare Society is the youth wing of Pakistan Red Crescent Society. Based on its outstanding performance and impressive activities in the service to the ailing humanity, the society has been receiving champion's trophy and has

been rated as the best youth wing of Pakistan Red Crescent Society Khyber Pakhtunkhwa for the last 22 years in a row. The literary society of the college is in-deed playing a vital role in projecting the real talents of the Khyberians. Our college magazine 'CENNA' is considered an epitome of excellence in the literary circles of the country. In addition, the college has a sports society, a debating club etc.

Dean of the College, Professor Dr. Noor ul Iman, M.B.B.S, FRCP (Edin), FCPS, PABX: (+92-91) 9216206-10, Principal: (+92-91) 9222162

Fax: (+92-91) 9222163

Email:- principal@kmc.edu.pk

Website: <http://www.kmc.edu.pk>

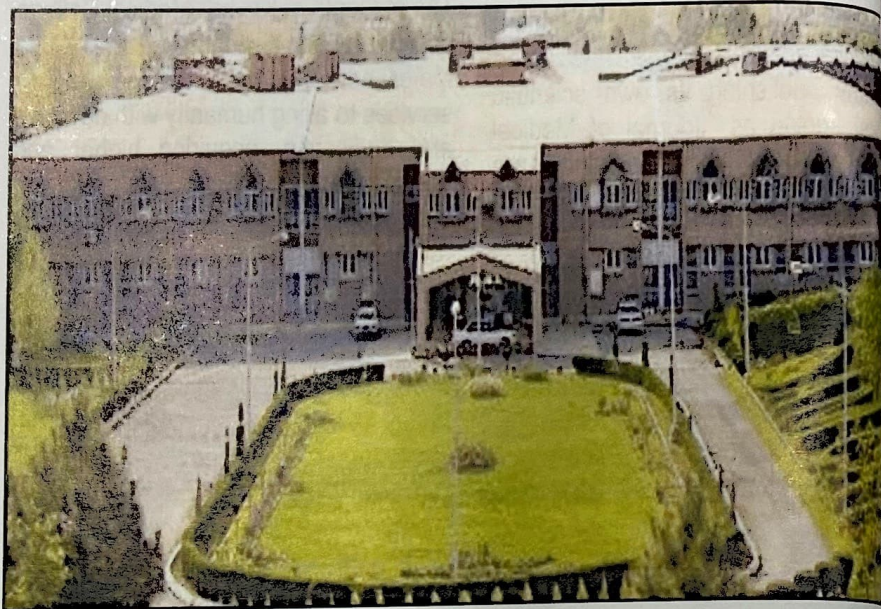
AYUB MEDICAL COLLEGE, ABBOTTABAD



Abbottabad is situated at an altitude of 1,225 m. (4002 ft.) above sea level and is surrounded by refreshing green hills of Sarban, one of the best-known hill resorts of Pakistan. It is situated on the Karakorum Highway, the Silk Route to China, 120 Km from Rawalpindi/ Islamabad. The climate is temperate with 4 distinct seasons, spring, summer, autumn and winter. The summer is pleasant while the winter is cool with occasional snowfall. The city is non-industrial, situated in the lush green Orash Valley and is fairly free from environmental pollution. It has a population of over 300,000.

In 1978, the Government of Khyber Pakhtunkhwa sanctioned establishment of Ayub Medical College, named after Late Field Marshal Muhammad Ayub Khan. The 1st academic year started on 15th May, 1979 with enrolment of 100 students. It was first established in a building provisionally acquired from the Education Department, and then moved to its present scenic location on Karakorum Highway on 30th December 1990. The College building is one of the most beautiful of all medical colleges of the country.

Since 1979 to date the College has undergone tremendous development. At present the Medical College comprises of modern buildings, 1,000 bedded Teaching Hospital, a School of Nursing, a Paramedical School, hostels, play grounds and other supporting amenities for the students and staff. The college has spacious lecture halls with most sophisticated audiovisual teaching aids, well equipped laboratories, museums



and a vast, centrally air-conditioned library having Text Books, Reference Books, CD's and Taps, Medical Journals, a 'Self-Learning Resource Centre' and a Computer Library with access to Internet.

More than 3000 doctors have graduated from Ayub Medical College so far who are holding high positions not only in the country but abroad as well, including UK and USA.

The college is affiliated to University of Peshawar and Khyber Medical University, Peshawar. It is recognized by the PMDC, General Medical Council of UK, WHO and many reputed Medical Councils of the world. The College of Physicians & Surgeons of Pakistan has recognized many of its Departments for postgraduate training. The Royal College of Obstetricians & Gynaecologists of UK has granted recognition to the Department of Obstetrics & Gynaecology for the clinical training of the MRCOG

candidates.

With commissioning of INOR (Institute of Nuclear Medicine, Oncology and Radiotherapy) at the campus, Ayub Medical College has joined nuclear medicine club where most modern techniques for diagnostic and radiation therapy are available.

Ayub Medical College is the only public sector medical college in the country publishing two indexed medical journals. The faculty of the College is publishing the 'Journal of

Ayub Medical College Abbottabad, 'Ayub Med Coll Abbottabad, (JAMC)'; and Pakistan Physiological Society publishes the 'Pakistan Journal of Physiology, Pak J Physiol, (PJP)' with its publication office at the Department of Physiology.

Journal of Ayub Medical College started in January 1988. It is a peer reviewed indexed journal and has gained its place

as a Standard Medical Journal recognised by the PM&DC. The JAMC is recognised by HEC in Category 'X'. It is indexed in PubMed and many other indexation agencies including Index Medicus of WHO EMRO. JAMC has separate ISSN for its print and online editions, and is one of the few medical journals of Pakistan, available free online with full text and illustrations. The URL for the Journal of Ayub Medical College is <http://www.ayubmed.edu.pk/JAMC>.

Pakistan Journal of Physiology is registered with International Serial Data System of France. It is published since 2005 and is recognized by the PM&DC as a Standard Medical Journal and is recognized by the HEC in Category 'Y'. PJP has separate ISSN for its print and online editions, and is also available full text with illustrations free online at <http://www.pps.org.pk/PJP>.

'Karakoram', the students' magazine of Ayub Medical College has always kept its standard and is known as a balanced magazine edited, formatted, printed and published by the students themselves. The magazine is published in English,

Urdu, Hindko and Pushto languages and contains write-ups from staff and students apart from scientific articles by the students.

Hostels for boys and girls are located at the campus, adjacent to college building. Four hostels for boys and one for girls are available besides, hostels for MO's, House Officers, Paramedics and Nurses. Full-time Resident Wardens, Deputy Provosts and

Provosts, separate for Boys' and Girls' Hostels, manage the hostels.

DENTAL SECTION OF AYUB MEDICAL COLLEGE

In order to provide Dental Education and better health facilities to the people of this region, a Dental Section has been established in Ayub Medical College during 1998/99. The Government has decided to complete the establishment of Dentistry Department in three phases. Two phases have been successfully completed whereas the work on Phase-III is in progress. The Section is making all efforts to provide improved facilities of Dental and Maxillofacial Surgery besides

training and teaching to BDS students for Degree of Bachelor of Dental Surgery from Khyber Medical University. The Department of Oral & Maxillofacial Surgery is recognized by the CPSP for FCPS training.

The Department has sufficient space, latest equipment, Laboratories, Lecture Rooms and a Library. There is qualified and experienced staff appointed for teaching and training the BDS students, and also to provide better dental treatment to the patients of this area.

The work on building of the Ayub Dental College has started already and the Dental Section of Ayub Medical College will soon be upgraded to a full fledged Dental College within the premises of Ayub Medical & Hospital Complex.

Dean of the College Professor Dr. Salma Aslam Kundi, MBBS, MSc (Physiology)

Tele: (+92-992) 9311100

Fax: (+92-992) 9311101

Email: dean@ayubmed.edu.pk

Website: <http://www.ayubmed.edu.pk>

KHYBER COLLEGE OF DENTISTRY, PESHAWAR

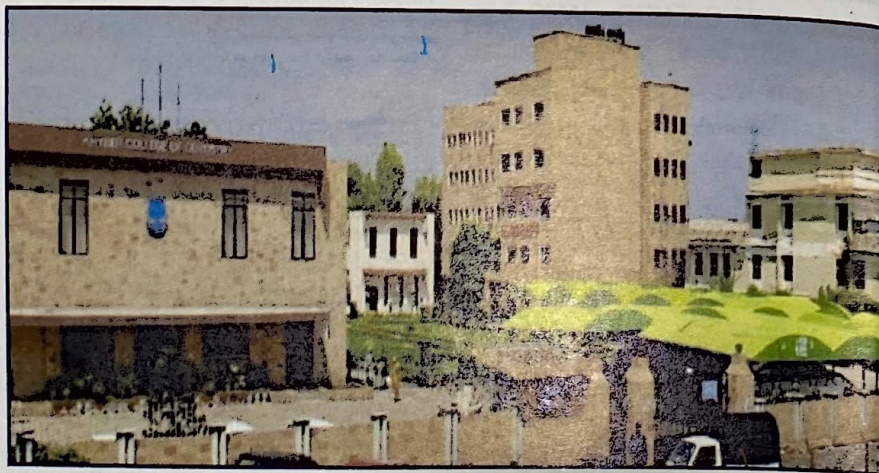


In order to provide dental health facilities to the people of this region, it was considered necessary to set up a teaching dental department at Khyber Medical College, Peshawar. The idea to start a dental department came from late Dr. Hassan Raza Shah, the then Principal of de'Montmorency College of Dentistry, Lahore. It was gladly accepted; appreciated and very much encouraged by General Mohammad Akram, the then Principal of Khyber Medical College and Mr. Mohammad Ali, the then Vice Chancellor of the University of Peshawar. The Department of Dentistry was formally declared open by the then Minister for Health Begum Mahmuda Salim on 12th October 1964.

The first batch graduated in 1968 while Pakistan Medical & Dental Council accorded permanent recognition of BDS degree in its council session held at Dacca (Bangladesh), the Capital of the then East Pakistan in November, 1968. From the modest start, it has grown to a fully developed teaching institute with its modern Oral & Dental Hospital having Surgeries, Operation theatre and Ward in its new building complex, which was opened on 9th September, 1978.

The annual intake of students has gone up gradually from 14 in 1964 to 77. So far more than 650 dental graduates have qualified from this institute. Nearly 300 patients receive daily dental treatment of various nature. This includes highly specialized treatment modalities like orthodontics appliances, treatment for oro-facial pain, facial injuries, oral cancer, Periodontology and, restorative dentistry, paedodontics and fixed/removable prostheses of various kinds.

On 11th January 1990, the Department of Dentistry was upgraded to the status of College by the then Chief Minister, Mr. Aftab Ahmad Khan Sherpao who made this announcement while presiding over the



inaugural session of the Silver Jubilee of the Department of Dentistry. Three new blocks housing the Department of Orthodontics, Prosthodontics and Operative Dentistry were added to the present setup in 1992. The department of Periodontology, Paediatric Dentistry and Oral Medicine were moved to their new places in the year 2000. The new Department of Oral & Maxillofacial Surgery, R&D Department, Pathology Lab, library having access to HEC Digital Library through Internet and cafeteria started functioning from the year 2010. Khyber College of Dentistry has started publishing its own Journal. "Journal of Khyber College of Dentistry.

(JKCD)" since December 2010. The College is having social welfare society, sports society and literary society. The Literary society of the College is really projecting the talent of the students. Our College magazine "Qindeel" is considered as one of the top class magazines. Major repair/renovation and installation of new equipment has given a new look to Khyber College of Dentistry.

The College is recognized by College of Physician and Surgeons of Pakistan (CPSP) for FCPS Part II training in the specialties of Oral & Maxillofacial Surgery, Prosthodontics and Orthodontics. The college is also recognized by CPSP for training of MCPS in Oral & Maxillofacial Surgery,

Prosthodontics, Periodontology, Operative Dentistry, Orthodontics and Family Dentistry. After having approval from Khyber Medical University and PM&DC, Postgraduate diploma courses (DCD) in the specialties of Periodontology, Operative Dentistry, Orthodontics and Paediatric Dentistry have been started from January 2012.

Khyber College of Dentistry is located within the University Campus and is adjacent to Khyber Medical College, Khyber Teaching Hospital and the Administration Block of the University of Peshawar. The shopping centre, telegraph and post office are situated very close. Within the large green campus vehicles of the University of Peshawar provide transport facility regularly whereas the private transport is also available from early morning till late in the night for travel between the College and Peshawar City. The College is close to World famous Khyber Pass having the most beautiful hilly areas and valleys.

Dean of the College Professor Dr. Ghulam Rasool BDS (Pesh.), MCPS, FCPS. Contact details are:

Tele: (+92-91) 9216217
Fax: (+92-91) 9218237
E-mail: kcd1964@gmail.com
Website: www.kcd.edu.pk

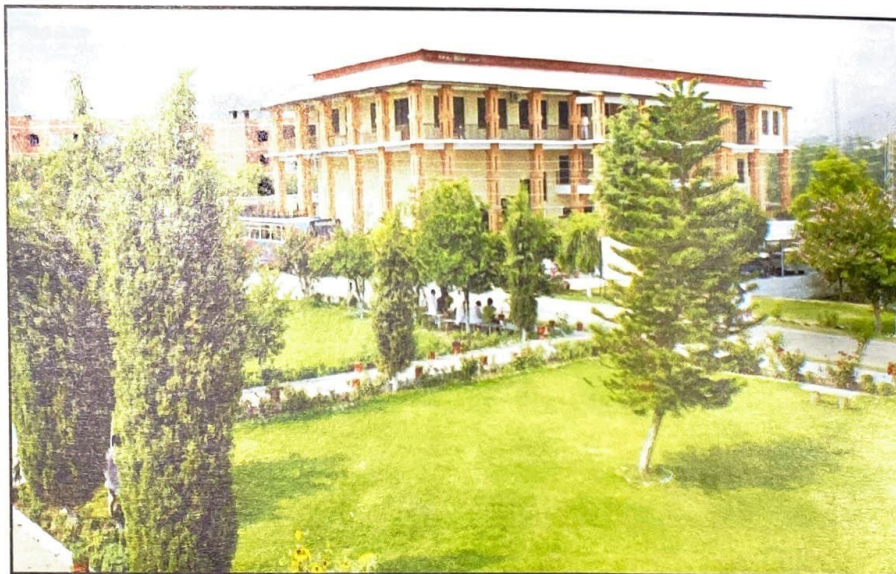
SAIDU MEDICAL COLLEGE, SWAT



Swat, the former state, was given the status of a District in 1970, this district holds a central position in the northern belt of the Province, and has significance as an area of anthropological interests in the history of South East Asia. Swat is an extremely attractive place for tourist and it is aptly known as the Switzerland of Pakistan.

Saidu Sharif, the former capital of Swat state, is the District Headquarter while adjoining Mingora is a commercial center. The present Swat owes its grandeur and developments to the inputs by BADSHAH SAHIB AND WALI OF SWAT. The population of Swat District is approximately 1.7 million.

Since the historical announcement in October 1998 of the establishment of Saidu Medical College, on the floor of the Provincial Assembly, Saidu Medical College started functioning with enrolment of 50 students. The classes started on 28th of December 1998 in the Holy month of Ramzan. The College is housed in the old Paramedic School and Hostel, which have been completely overhauled, renovated and furnished. Hostel facilities for both male and female student are available. Peshawar University affiliation committee visited the college on 08th October 1999 Saidu Medical College; Swat and approved the affiliation of this college with the University of Peshawar. With the passage of time, when the Khyber Medical University came into existence;



the college got affiliated with Khyber Medical University, Peshawar.

By the grace of almighty Allah, Pakistan Medical and Dental Council has now recognized this college to train 100 students annually. The college has excellent professional staff in preclinical and clinical departments. Many graduates of Saidu Medical College have passed FCPS in various specialties and are working all over Pakistan and abroad. The name of Saidu Medical College has been included in the WHO list of international medical colleges and the degree has been recognized in USA and UK. Saidu Group of Teaching Hospitals is attached to Saidu Medical College, Swat with 500 beds for all the specialties. A mega project i.e up-gradation of Saidu Group of Teaching Hospital to 1225 beds is under progress and its 1st phase is

completing in December 2016. The College administration has succeeded and got accreditation of six major disciplines for post graduate qualification i.e Medicine, Surgery, Gynae/Obst, Pediatrics, ENT & Ophthalmology with College of Physician and Surgeon of Pakistan. Training to TMOs for FCPS-II and MCPS has been commenced with effect from 1st July 2011. The institutions are being maintained by the Government of Khyber Pakhtunkhwa and are under the administrative control of Health Department.

Principal of the college is Professor Dr. Taj Muhammad Khan, (Tamgha E Shujat)
MBBS, M. Phil, FCPS
Tele: +92-946-9240134
Fax: +92-946-9240135
Exchange: +92-946-9240131-32
Email: - info@smcswat.yahoo.com

GOMAL MEDICAL COLLEGE, D.I.KHAN



Gomal Medical College is located in Dera Ismail Khan which is the southern most District of Khyber Pakhtunkhwa, situated on the right bank of River Indus, about 300 Km South of Peshawar on main Indus highway from Peshawar to Karachi. Population is more than 1.2 Million. To the North East of it lies District of Mianwali and to the East District Bhakkar of Punjab across the River Indus. It is attached to District Dera Ghazi Khan in the South where as bounded by South Waziristan Agency in the West along Afghanistan border. In the South West it is attached to District Zobe of Baluchistan Province.

The Chief Minister of Khyber Pakhtunkhwa announced Gomal Medical College in a session of Provincial Assembly on 26th August 1998. The college was initially established in a portion of central Library of Gomal University. Fifty seats were sanctioned for session 1998-1999.

Gomal Medical College has two Teaching Hospitals i.e. DHQ Teaching Hospital and Mufti Mehmood Memorial Teaching Hospital, Dera Ismail Khan.

New building of college which is located near Mufti Mehmood Memorial Teaching Hospital is constructed on 37.5 acres of land.

The building of college is almost complete and the college will be shifted to the new building in summer vacations. The upcoming session will start in new building.



It is a purpose built college with 03 hostels, Playing Grounds, an Auditorium, a separate Cafeteria, a Library, a huge Mosque and colony for college staff, separate building for each Department and buildings consisting of 6 Lecture Halls and 4 Exam halls.

The college has been regularly publishing its scientific journal "Gomal Journal of Medical Sciences" (GJMS) since 2003: recognized by Pakistan Medical & Dental Council of Pakistan. (PM&DC), Higher Education Commission (HEC) and WHO. GJMS is Biomedical Journal of International repute, published by the Medical Research Society of Gomal Medical College. A student's magazine HAYYAN is also regularly published by the college. The Gomal Medical College was formally

recognized by PM&DC in 2007.

Students of GMC have held top positions in KMU Examination and the college overall passing ratio is always satisfactory.

Dean of the College Professor Dr. Akhtar Munir Gandapur, M.B.B.S, FCPS. Head Department of Surgery.

Phone: Office: (+92-966) 856184
Exchange: (+92-966) 9280338-39
Fax: (+92-966) 856184
Email: gmc dik.principal@gmail.com
Web: www.gmc dikhan.edu.pk

KHYBER GIRLS MEDICAL COLLEGE, PESHAWAR



There was a dire need in Khyber Pakhtunkhwa to have a medical college for girls such a facility already exists in Punjab in the name of Fatima Jinnah Medical College Lahore and in Sindh in the name of People's Medical College Nawabshah where only female students are admitted.

The Government of Khyber Pakhtunkhwa took a policy decision in this regard and in August 2003 the Provincial Cabinet approved the establishment of a separate Girls Campus of Khyber Medical College located at Hayatabad with an object to upgrade the same to an independent Girls Medical College in due course of time. The Girls Campus of K.M.C started functioning in PDA Block-IV, Phase-V Hayatabad and admitted First Batch of 50 students during the Academic Session 2004-05.

The Chief Minister Khyber Pakhtunkhwa during the inauguration ceremony of Girls Campus, KMC on 13th May 2006 announced the up gradation of Girls Campus KMC to an Independent college "Khyber Girls Medical College" with effect from 8th December 2005. Hayatabad Medical Complex is its teaching hospital. At present the Khyber Girls Medical College has its own faculty (Basic/Clinical).

All the Basic Sciences departments of Khyber Girls Medical College have well



established/ well equipped Laboratories, Lecture Theatres, Dissection Hall, Anatomy Museum, and Self Learning Resource Center and two Libraries one for the staff and the other for the students with sufficient number of latest editions of Text Books, Reference Books and Journals.

The Government of Khyber Pakhtunkhwa has allotted 30 kanals of land adjacent to the college building for the construction of two hostels for the students, lecture theatres, examination hall and auditorium etc. The construction work has already been started, and will be completed during the current financial year.

Pakistan Medical & Dental Council (PM&DC) and College of Physicians and Surgeons Pakistan (CPSP) have already recognized the Khyber Girls Medical College.

This institution has admitted 7th Batch of 50 students of First Year MBBS Class during the Academic Session 2010-11.

During the short period of existence Khyber Girls Medical College is going to start Post graduate courses (M.Phil) in all the Basic Sciences during the current session, duly recognized by Pakistan Medical and Dental Council.

Dean of the College Professor Dr. Muhammad Noor, MBBS, MRCP, FRCP.

PABX (+92-91) 927684-94

(+92-91) 9217701

Fax: (+92-91) 9217702

Website: www.kgmc.edu.pk

BANNU MEDICAL COLLEGE, BANNU



Thousands of years back "AKRA" was a famous city, whose relics are present even now in Bannu. It was ruled by a King named "Rustam". He had a sister, named "Bano". He bestowed "AKRA", to be called the city of "Bano" which with surrounding area the "Allaqa of Bano". A Chinese traveler also referred to this area as "Bano" in his travelogue, which with the passage of time has been distorted to the present name of Bannu.

The modern district of Bannu was a tehsil of the old district of Bannu in the British India and served as a military base for expeditions by the British troops to Tochi Valley & Waziristan. In 1901, some areas of old Bannu District, lying north of Indus River, were coded to Mianwali District of Punjab.

Bannu is a thickly populated district located in the heart of southern region of Khyber Pakhtunkhwa, bordered by the Districts of Karak & Lakki Marwat and the North & South Waziristan Agencies. It also has a huge catchment area of Afghan population.

The people of Bannu and surrounding districts were facing dearth of health facilities and the establishment of a Medical College in Bannu was need of the hour. The then Chief Minister of Khyber Pakhtunkhwa, Mr. Akram Khan Durrani announced the establishment of Bannu Medical College (BMC), Bannu and the Health Department issued a notification on 31st August, 2006, with the following main objectives:

- To produce doctors who will meet the challenges of modern times in the field of medicine.



- To develop research and encourage continuing medical education on the most recent lines on the analogy of the developed countries.
- To improve health care facilities for the public.

BMC, Bannu is temporarily based in the current building having enough infrastructures with covered area of over 6000 sq. feet. After inspection of BMC, Bannu by PMDC team on 13th May, 2011 BMC has been recognized for 100 students.

The current building has been transformed excellently into a purpose-built building to host the Basic Sciences Departments of the college. The permanent purpose built building will be located in Bannu Township in area of 600 Kanal land and the construction of new building shall start soon this year. The college has enough faculty to teach & train the students.

The State of the Art 600 bedded Khalifa

Gul Nawaz Teaching Hospital, with 210 functional beds at present, 244-bedded DHQ Teaching Hospital and 130 bedded Women & Children Teaching Hospitals are attached with BMC Bannu. The College has a Self Learning Resource Centre (SLRC) with internet facilities and with a space available for over 30 computers. The college has a capacious library having more than 5000 books for the students and staff about which the PMDC has remarked as "The college has an excellent SLRC center and developed library". The college has an auditorium, a good audiovisual department and a committee room having a space for 25 staff members.

The college has fully air-conditioned 04 lecture halls each with a seating capacity for 150 students. The college has established fully equipped laboratories of Basic Sciences Departments, along with Hemophilia & Thalassemia Center and a PCR research laboratory. A well-equipped Forensic Science Laboratory is

in the process of establishment. There is a separate medical education department to arrange conferences, seminars, workshops and also helps in the integrated teaching in accordance with the modern trends.

The College has sufficient hostel facilities for boarderst. The girls hostels are located in the nearby DHQ Teaching Hospital with full security arrangements.

The College has got excellent transport facilities comprising of six air-conditioned, 65-seated Hino buses, one coaster and one Hiace for staff and 02 staff cars.

The College is affiliated with Khyber Medical University (KMU) and giving very good results competing well with established public sector medical colleges of the province.

The future plans of BMC are as under:

1. Introduction of Postgraduate programs like M.Phil in Basic Sciences i.e.
 - Biochemistry
 - Physiology
 - Pathology
 - Community Medicine
2. Establishment of Forensic Molecular Lab

3. Establishment of diagnostic & research center

Dean of the College, Prof. Dr. Muhammad Akram Khattak, MBBS, MPH, MSc (Epidemiology) & (Biostatistics) Dean/, Bannu Medical College, Bannu.

Telephone:

Exchange: (+92-928 9270344) Office: (+92-928) 9270356

Fax (+92-928) 9270358

Website www.bmcbannu.edu.pk

BACHA KHAN MEDICAL COLLEGE, MARDAN

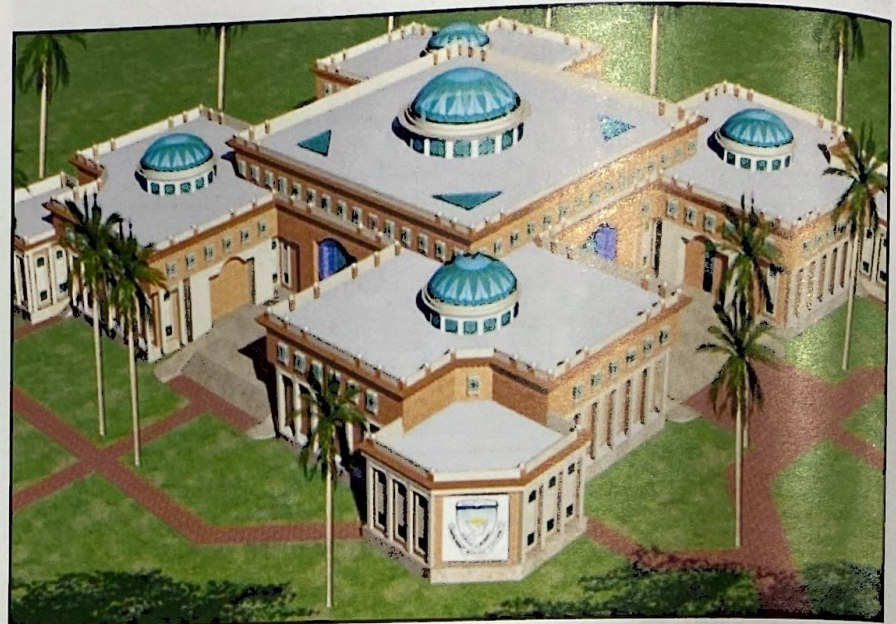


Mardan (the land of hospitality) is the 2nd major city of Khyber Pakhtunkhwa which is located at an altitude of 283 meters (937 feet). The ease of access makes it one of the best approachable city in the whole Province. Situated on the National highway at a distance of 15 km from Nowshera and 2 km from Motorway Rashakai interchange, Mardan is also surrounded and linked by road with Charsadda, Swabi, Bunir, Malakand, Swat and Dir.

It was part of ancient Gandhara civilization, whose remains are scattered in different areas of Mardan District like ShahbazGarhi and Takht Bhai. Today's Mardan is a mixed Industrial and Agricultural district while the city of Mardan is rapidly becoming an educational center housing AWKUM, BKMC, UET campus and Agricultural university campus.

The Medical College at Mardan was inaugurated on 1st January 2010 in the posh area of Sheikh Maltoon Town Mardan, named after the great freedom fighter of the soil, Khan Abdul Ghaffar Khan, better known as Bacha Khan.

The present campus of Bacha Khan Medical College (BKMC) is based in a restructured portion of Mardan Medical Complex, which itself spreads over 500 kanals of land, and is the teaching hospital for BKMC. It has all the necessary infrastructure up to the final year MBBS and BDS. The Academic Block houses fully equipped, air-



conditioned lecture theatres, Library, SLRC, faculty and departmental offices.

A new block containing a Student Affair Section, Guest Waiting Area, separate Cafeterias for Male and Female, a new Lecture Theatre, offices for faculty and 250 capacity Auditorium, named after the founder of BKMC (Ameer Haider Khan Hoti, Chief Minister Khyber Pakhtunkhwa) for his contributions to the college as "Haider Hall" have also been constructed and are fully functional. Work on the state of the art, purpose built building, is in progress which will be completed at a cost of approximately Rs.1.7 Billion.

The Laboratories and Museum, fully Equipped with the latest Instruments / Equipment for Biochemistry, Physiology, Anatomy, Pharmacology, Pathology,

Forensic and Community Medicine have also been established. Dissection Hall has latest Mortuary cooling unit with a capacity to store up to six dead bodies. A Toxicology Lab with state of the art equipments, the second one of its kind in the province is also present in Forensic Department. Besides this a postmortem section with its own cooling unit is also operational at MMC for medico legal cases and autopsies.

A Computer Lab called SLRC (Self Learning Resource Center) has also been established with the latest computers and equipment to cater the need of the students and staff. The whole college is connected with SLRC through a wifi wireless network with 4MB DSL line.

An E Library is established on 2016, more

than 2000 Medical Books and round about 4000 non-medical books or available.

The College, despite being the youngest of the public sector medical colleges has services of the required, qualified teaching staff (Basic / Clinical), recruited through Public Service Commission.

The college has a well-established, fully air-conditioned Library having more than 6000 text / reference books and journals. It has separate reading areas for students and staff.

Department of Medical Education has also been established to keep the students and teachers in line with modern system of medical education.

More recently the Department of Dentistry has been established in the college with all the necessary staff and equipment. First batch of BDS students has been admitted from session 2011-12.

Sufficient accommodation is available for students, both for Girls and Boys. Transport facility is being provided to the students. For extra-curricular activities Social Work, Sports and Literary Societies are present in the college to promote a healthy and friendly atmosphere in the college among staff and students.

BKMC is the first Public Sector Medical Colleges to be recognized in the first year of its establishment by Pakistan Medical & Dental Council in 2010. The college is also affiliated with KMU Peshawar since 2010. College of Physicians and Surgeons Pakistan (CPSP) granted accreditation for postgraduate training in major disciplines at MMC Teaching Hospital in 2011.

Mardan Medical Complex (MMC), a having all the major and minor specialities with state of the art diagnostic (CT scanner, MRI) and supportive services is the teaching hospital of BKMC. Phase-I and II of MMC have already been completed and the total bed strength at present is over 400. Phase III has been approved which will increase the bed strength to 800. In addition to this, construction work on a 200 bedded Mohtarama Benazir Bhutto Shaheed Children Hospital has been started and will be completed soon.

Admitting capacity of the college is 50 in MBBS and 25 in BDS courses. At present three batches of MBBS and 2 batches of BDS have passed out.

At BKMC from the very beginning the vision of Principal has been to stress on the quality of education. Proving this wisdom academic achievements have

been impressive since the start of the college. The 1st year MBBS result was 82 % and the college stood first among all the Public and Private Sector Medical Colleges in the Province in its first test. Subsequent results have also been more than 85 %, reflecting the high quality of education and dedication of the staff of the college.

Lastly for future expansion of the college 1000 Kanals land near Sheikh Maltoon Town has been acquired. The master planning has been done, and most of the land has been marked for the construction of staff colony, CPSP and KMU regional offices, neuro sciences Department, Institute of Nuclear Medical and Radio therapy and a separate Dental college.

Dean of the College:

Prof. Dr. Muhammad Israr, MBBS, FRCS

Telephone Principal:

(+92-937) 9230582,

Exchange: (+92-937) 9230583,

Fax: (+92-937) 880388, 9230681

E-mail: dean@bkmc.edu.pk
sas@bkmc.edu.pk

Website: www.bkmc.edu.pk

NOWSHERA MEDICAL COLLEGE, NOWSHERA



Nowshera is situated on the both bank of the river Kabul on the main G.T. road at a distance of 40 KM from Peshawar capital of KPK and about 130 KM from Rawalpindi. in the past Nowshera was the Tehsil of the Peshawar Distt; and about one decade before the Govt. of Khyber Pakhtunkhwa (NWFP) declared Nowshera as district. In the east of district Nowshera there is river Indus and also a famous park KUND. The people of Nowshera enjoy four weather/Seasons in the year i.e Spring, Autumn, Summer and Winter. Before this there was no Medical College either in public sector or private sector in Nowshera



Distt: and keeping in view the demand of the people of Nowshera and also to bring at par with other districts of the province in the field of medical education, the Govt. announced on 28 March 2014 the establishment of Nowshera Medical College. The Nowshera Medical College is going to start its 1st academic session/ classes from October/ November of

2014, with enrollment of 100 students. For this purpose the Govt. of Khyber Pakhtunkhwa also declared the district head quarter hospital Nowshera having 500 beds as teaching hospital for this college. The Govt. has also been trying to start construction of college on purposeful building/ hostel building etc, very soon. This college has got affiliation

with the Khyber Medical University Peshawar.

Prof.Dr.Muhammad Jehangir Khan,
Dean, MBBS, FCPS (Pediatric Surgery)
LL.B. Telephone No.0923-9220330-3,
Fax No.0923-9220322

GAJJU KHAN MEDICAL COLLEGE, SWABI



Gajju Khan Medical College is located on the main Swabi-Jehangira road at Bacha Khan Medical Complex, Shah Mansoor, at a distance of 3 kilometers from Swabi Motorway Interchange. This is the current temporary location of the College which will be shifted to the newly constructed and purpose-built building at Ambar Kunda, Swabi.

Gajju Khan Medical College is named after the late great Pakhtun leader Gajju Khan (1490-1565). He participated in the battles of Swat and Malakand in 1515. He remained a great leader of his time and ruled the Pakhtun soil of our province now known as Khyber Pakhtunkhwa for 35 years. He provided many services, the most notable of which was the development of many educational institutes. He died in 1565 and is buried at Shah Mansoor.

The establishment of an institution such as the Gajju Khan Medical College in Swabi was in accordance with the dire need for enhancing the quality of medical education and thereby ensuring the provision of better health services to people of the area. It promises to be a bright prospect, opening doors for the influx of modern medical education for the people and thus ensuring better health standards.

The realization of this dream seemed far-fetched until the Honorable Speaker Of The Provincial Assembly KP, Mr. AsadQaiser, stepped forward and announced that he would do his utmost to attend to this requirement at this hour



of need. He kept true to his word and approved this mega-project from the Government of KP. He said these steps were not a favour to the people of Swabi; in fact "it's the right of the people of Swabi." He claimed he would strive hard to compensate the region for the 65 years that its people had been deprived of developmental projects. Eventually, it was Mr. AsadQaiser who laid the foundation stone of the College on 9th February 2014.

The main objectives of the College include:

- 1) Improvement of healthcare facilities in district Swabi.
- 2) To train a new cadre of doctors who will excel in the field of medicine.
- 3) To improve the quality of medical education in the area.

There are five teaching hospitals associated with Gajju Khan Medical College; the foremost being Bacha Khan Medical Complex Shah Mansoor. The other hospitals include DHQ Swabi, Civil Hospital Topi, Sohrab Hospital Marghuz

and the RHC Lahor (Swabi District). However, once the College is moved to its permanent location, Bacha Khan Medical Complex (Shah Mansoor) will become the main teaching hospital of the College.

The first academic session will imitate with the enrollment of 100 students. The College has enough lecture theatres and other facility to host the basic sciences departments of the College. Equipped laboratories, auditorium museums, examination halls, digital library and canteens are all an appealing aspect of the College. A few noteworthy developments include the establishment of Department of Medical Education and a Self-Learning Resource Centre (SLRC) with the facilities of computers and internet.

Accommodation for the students in the form of one hostel is available within the premises of Shah Mansoor Medical Complex and the government has processed to acquire 53 canals and 11 marlas of land for the construction of new hostels for the staff and students. The

College also provides transport facility in the form of buses.

Honorable Health Minister Shehram Khan Tarakai, who also coincidentally belongs to the Swabi district, has ensured that the College shall meet all the standards of modern medical education and provide quality education to the students so as to give rise to new

doctors who will be ready to take on new challenges in the field of medicine. The dynamic leadership of the Hon'ble Minister for Health is instrumental in developing the necessary infrastructure at a fast pace.

Principal of the College Professor Dr. Muhammad Zubair Khan, MBBS, DDV, FRCP (UK).

Phone 0938-280421 and

Fax No: (+92) 0938-280221,

Admin : 0938-280385

Email: gkmc.swabi@gmail.com

website: www.gkmc.edu.pk

ADMISSION POLICY

DEPARTMENT OF HEALTH
GOVERNMENT OF KHYBER PAKHTUNKHWA

KHYBER PAKHTUNKHWA
MEDICAL & DENTAL COLLEGES

SESSION 2018-19

ADMISSION POLICY

GENERAL POLICY— IMPORTANT NOTES

1.	This prospectus is approved by the Government of Khyber Pakhtunkhwa and applies to all MBBS and BDS students of all public sector Medical and Dental Colleges of Khyber Pakhtunkhwa.
2.	This prospectus is approved by the Government of Khyber Pakhtunkhwa, issued for the session 2018-19. It is applicable to all the candidates applying for admission to MBBS and BDS programmes for the current session and to those who are already admitted/ studying in the public sector Medical and Dental Colleges in Khyber Pakhtunkhwa. All candidates must study the prospectus before applying for admission.
3.	The admission Policy contained in the prospectus shall be applicable to all the public sector Medical & Dental Colleges of Khyber Pakhtunkhwa.
4.	The Medical/Dental colleges of Khyber Pakhtunkhwa offer 5-years MBBS and 4-years BDS courses leading to MBBS and BDS degrees respectively and are affiliated with Khyber Medical University.
5.	Admission to the Medical and Dental Colleges for all Provincial seats will be finalized by the Joint Admission Committee (JAC).
6.	A Joint Merit List for admission to the Medical and Dental Colleges for all Provincial seats will be finalized by the Joint Admission Committee (JAC).
7.	Admission to the respective Medical and Dental Colleges will be carried out by the respective Local Admission Committee (LAC) of that College.
8.	LAC will comprise of: <ol style="list-style-type: none"> 1. Dean/Principal of the respective College who will be the Chairman by virtue of being member of JAC. 2. Associate Dean (Undergraduate)/Vice Principal (Concerned) 3. One of the professors of the respective college as Director Admissions. 4. Legal Advisor of LAC
9.	The Admission Schedule for all the Medical and Dental Colleges of the Province will be announced by the JAC.
10.	The candidates shall submit their Admission Forms by hand at Students Affairs Section, Khyber Medical College, Peshawar. Admission Forms received by Post, urgent mail, courier service or any other means shall not be entertained.
11.	No candidate will be admitted unless he/she has paid the fee and other dues. All dues must be paid by the due date (within one week of interview), otherwise the admission of defaulting students will be cancelled and next candidate on merit will be considered for admission.
12.	A candidate will give his/her preferences in order of priority for the medical / dental colleges in the designated space provided in the Admission Form which once given shall be final and cannot be changed subsequently. This condition is mandatory and neither any subsequent change is entertainable nor any exceptions will be made. The candidate shall be considered only for those colleges for which he/she has shown his/her preference. A candidate, under no circumstances, will be considered for a college not listed in his/her preferences.
13.	No admission form will be accepted after the due date for submission of forms.
14.	All medical/dental colleges shall display and send a list of seats vacated/unfilled due to any reason, within fifteen (15) days after the completion of the interviews for admission to all Public sector Medical/Dental Colleges.
15.	Filling of the vacant seats shall be on the basis of merit cum choice amongst the waiting list and this will be the responsibility of Joint Admission Committee (JAC) of the Public Sector Medical/Dental Colleges of Khyber Pakhtunkhwa.
16.	Consideration of shifting of a candidate against a vacant seat shall be against the quota it becomes vacant in and within 30 days of start of classes and shall be mandatory to the effect that the candidate shall join the institution strictly in accordance with the preference of colleges specified in his/her Admission Form and NO exception, whatsoever, will be taken under any circumstances. In case a seat becomes vacant after 30 days of start of classes it shall be filled from the waiting list against the quota to which it belongs but not later than 60 days of the start of classes. In all other cases a seat becoming vacant shall remain vacant and shall stand added

	to the next year admissions.
17.	The information regarding number of seats left vacant in any medical/dental college after the completion of stipulated period (60 days after commencement of classes) will be adjusted as per PM&DC provisions.
18.	Litigation on any category of seat in a medical/dental college shall be the sole responsibility of the JAC, who will be liable to pay the concerned advocate and assist him in preparation of case.
19.	The fee and subscription given in this prospectus are payable by all the students of Medical & Dental Colleges (except the foreign self finance category) from 1st year to Final year classes irrespective of year of admission. This may be subject to adjustment by the Government from time to time corresponding to inflation and cost of education.
20.	The Dean/Principal of college reserves the right to make necessary changes in the syllabi, curricula and examination procedure for MBBS/BDS students as and when notified by Pakistan Medical & Dental Council at any time during the course of studies.
21.	The public sector Medical/Dental colleges will endeavor to establish provision for scholarships and other support schemes for students to support meritorious, needy students in meeting the cost of their education.
22.	The Joint Admission Committee (JAC) shall exercise its power to decide all cases related to admission and the decision of the JAC shall be binding on the candidates. Review against the decision of the JAC can be filed before the Chairman JAC within 3 days after the final selection. Aggrieved candidates however, will have the right of appeal to the Government within 7 days, and the decision of the Government will be final.
23.	All the candidates and students are required to read, know and abide by the rules and regulations mentioned in this prospectus.

SEATS DISTRIBUTION

The total seats available for admission in each Medical/ Dental college and their allocation against each category is shown in the following table:

Category of Seats	MBBS									BDS			Total
	KMC	AMC	SMC	GMC	KGMC	BMC	BKMC	NMC	GKMC	KCD	ADS	BKDS	
Provincial:													
Open Merit Seats	163	138	62	62	76	55	40	83	38	30	10	16	773
Self Finance Seats:													
a. General Self Finance Seats	16	20	10	12	10	12	5	8	5	5	2	4	109
b. Foreign Self Finance Seats	7	8	2	2	4	2	3	7	4	2	1	0	42
Reciprocal for N.M.C (Multan).	1	0	0	0	0	0	0	0	0	0	0	0	1
Minorities	1	0	1	0	0	0	0	0	0	1	0	0	2
Disabled Candidates	2	2	0	0	0	0	0	0	1	1	0	0	6
Khyber Pakhtunkhwa Backward Areas:													
Kohistan	2	2	0	0	0	0	0	0	0	0	1	0	5
Chitral	2	2	0	0	0	0	0	0	0	1	1	0	6
Dir Upper	1	1	0	1	1	0	0	0	0	0	0	0	4
Dir Lower	1	1	0	0	0	0	0	0	0	0	0	0	2
Gadoon	1	1	0	0	0	0	0	0	0	0	0	0	2
Amazai	0	1	0	0	0	0	0	0	1	1	0	0	1
Gadoon&Amazai	0	0	0	0	0	0	0	0	0	0	0	0	2
Upper Tanawal	1	0	0	0	0	0	0	0	0	0	0	0	1
Tor Ghar (Kala Dhaka)	0	1	0	0	0	0	0	0	0	0	1	0	2
Battagram	1	1	0	0	0	0	0	0	0	0	0	0	2
BalaKot	0	1	0	0	0	0	0	0	0	0	0	0	1
Allai	0	1	0	0	0	0	0	0	0	0	0	0	1
Shangla	0	1	1	0	0	0	0	0	0	1	0	0	3
Buner	0	1	1	0	0	0	0	0	0	0	0	0	2
Kalam	0	0	1	0	0	0	0	0	0	0	0	0	1
Hangu	2	0	0	0	0	0	0	0	0	0	0	0	2
Tank	0	0	0	2	0	0	0	0	0	0	1	0	3
Federal Seats:													
FATA	35	28	10	10	5	25	1	2	1	5	5	5	132
FATA/ Balochistan Project Seats	4	4	5	5	3	5	0	0	0	2	1	0	29
AJK	1	22	5	5	0	0	0	0	0	0	1	0	34
Gilgit Baltistan (Northern Areas)	1	6	0	0	0	0	0	0	0	0	0	0	7
Technical Assistance Program Seats	3	2	0	0	0	0	0	0	0	1	0	0	6
Overseas Pakistanis of Khyber Pakhtunkhwa Seats	1	2	0	0	0	0	0	0	0	0	0	0	3
Afghan National Seats	2	2	2	1	1	1	1	0	0	1	1	0	12
Indian Occupied Kashmir seats (IOK)	2	2	0	0	0	0	0	0	0	0	0	0	4
Total	250	250	100	100	100	100	50	100	50	50	25	25	1200

- Note:**
- Any enhancement of seat in any medical/dental college before the completion of admission process will be entertained. However any seat enhancement after the admission process will be adjusted in next session.
 - Candidates sent by the nominating agencies (HEC, AJK, Reciprocal, Economic Affairs etc) after the closure of admission date will not be entertained and they will be adjusted in the next session.
 - The reservation of quota for various categories of students for admission to medical colleges was declared to be without authority in line with the decision of August Supreme Court of Pakistan (Attya Innayat Case) except following categories:
 - Disabled persons

- ii- Students domiciled in FATA
 - iii- Students domiciled in under developed districts
 - iv- Students domiciled in Azad Kashmir
 - v- Students domiciled in Northern areas
 - vi- Afghan refugees
- Who have taken school and intermediate education in education institutions situated within those areas.
4. Seats left over in any category will be converted to open merit seats after 60 days and will be filled from open merit seat in the next year admission.

Left over vacant seats from the session 2017-18

	KMC	AMC	BKMC	SMC	GMC	KGMC	GKMC	NMC	BMC	KCD	ADS	BKDS	Total
OPEN MERIT (2017-18)		1		1	1		0			3		1	7
G.SELF FINANCE (2017-18)					2					1		3	6
AJ&K SEATS (2017-18)					1								1
PTAP (2017-18)										1			1
AFGHAN (2017-18)	2	2	1	2	1	1			1	1	1		12
AFGHAN (2014-15)	1												1
Total Vacant Seats	3	3	1	3	5	1	0	0	1	6	1	4	28

Note: The above left over seats are subject to approval by PM&DC

SEATS FOR KHYBER PAKHTUNKHWA CANDIDATES IN AZAD JAMMU & KASHMIR MEDICAL COLLEGES*

Category of Seats		Mohtarama Benazir Bhutto Shaheed Medical College Mirpur	Azad Jammu & Kashmir Medical College Muzaffarabad	POONCH MEDICAL COLLEGE RAWLAKOT
1	Open Merit seats	4	4	4
2	FATA Seats	1	1	1
	TOTAL	5	5	5

* These seats are subject to any changes made by the Government of Azad Jammu & Kashmir.

SEATS IN FATIMA JINNAH MEDICAL COLLEGE, LAHORE ON PROVINCIAL BASIS*

The distribution of these seats will be as under:		
a) Open Merit		5
b) Seats for Backward Areas declared by the Khyber Pakhtunkhwa Government		2
	TOTAL	7

* These seats are subject to any changes made by the Government of Punjab.

FATA RESERVED SEATS IN MEDICAL & DENTAL COLLEGES OUTSIDE KHYBER PAKHTUNKHWA*

S. No.	Name of the College	MBBS	BDS	TOTAL
1	Bolan Medical College, Quetta	7	0	7
2	Fatima Jinnah Medical College Lahore	8	0	8
3	Shaheed Mohtarma Benazir Bhutto Medical College, Larkana	3	0	3
4	Liaquat University of Medical & Health Sciences Jamshoro	0	1	1
5	Punjab Medical College, Faisalabad	1	0	1
6	Rawalpindi Medical College, Rawalpindi	1	0	1
7	Alama Iqbal Medical College, Lahore	1	0	1
8	Nishtar Medical College, Multan	1	2	3
9	Quaid-e-Azam Medical College, Bahawalpur	1	0	1
10	King Edward Medical College, Lahore	1	0	1
11	De'Montmorency Dental college Lahore	0	1	1
	Total	24	4	28

*These seats are however, subject to such changes as Federal Government and the concerned Provincial Government may make within their respective competency.

ELIGIBILITY FOR APPLYING AGAINST DIFFERENT CATEGORIES OF SEATS

1.	Selection under each category of seats shall be done on the basis of inter se merit amongst the eligible applicants.
2.	Description and eligibility for applying under various categories of seats is given under respective headings below. The applicants must study the admission policy carefully and then apply accordingly.
3.	The candidate should give at least three telephone numbers (including landline and mobile) which must be active and contactable.
	A. KHYBER PAKHTUNKHWA PROVINCIAL SEATS The candidates seeking admission against Khyber Pakhtunkhwa Provincial Seats (Open Merit/ Reserved Seats, seats in Fatima Jinnah Medical College, Lahore and reciprocal seats in Nishtar Medical College, Multan) and his/her father must be <i>bonafide</i> nationals of Pakistan with a valid domicile of Khyber Pakhtunkhwa, and if father is not alive then the mother's valid domicile of Khyber Pakhtunkhwa will be considered.
I.	OPEN MERIT SEATS These Seats are open to applicants possessing valid domicile certificate of Khyber Pakhtunkhwa including the backward areas of Khyber Pakhtunkhwa. The applicant's father shall also possess valid domicile certificate of Khyber Pakhtunkhwa including the backward areas of Khyber Pakhtunkhwa and if father is not alive then the mother's valid domicile of Khyber Pakhtunkhwa including the backward areas of Khyber Pakhtunkhwa will be considered.
II.	SELF FINANCE SEATS The Self Finance Seats are open for applicant's who possess valid domicile certificate of Khyber Pakhtunkhwa including the backward areas and FATA. The applicant's father should also have a valid domicile of Khyber Pakhtunkhwa including the backward areas and FATA and if father is not alive then the mother's valid domicile of Khyber Pakhtunkhwa including the backward areas and FATA will be considered. a. GENERAL SELF FINANCE SEATS The Khyber Pakhtunkhwa General Self finance seats are open for applicants of Khyber Pakhtunkhwa including backward areas and FATA. b. FOREIGN SELF-FINANCE SEATS These seats are for applicants who hold a valid foreign nationality. The applicant should fulfill the admission criteria laid down by Higher education Commission, Government of Pakistan, Islamabad, and the admission criteria of Khyber Pakhtunkhwa Public Sector Medical/ Dental colleges.
III	SEATS IN FJMC LAHORE (FOR GIRLSONLY) The candidates who wish to apply against these seats should indicate their preference in appropriate column given in their respective admission forms. The nomination against these seats will be made from amongst the female candidates in the combined Open/Backward Area merit list on merit cum choice.
IV	KHYBER PAKHTUNKHWA BACKWARD AREAS SEATS These seats are reserved for the backward areas of the Province of Khyber Pakhtunkhwa. The backward areas are identified as Upper & Lower Dir, Chitral, Kohistan, Gadoon, Amazai, Tor Ghar (Kala Dhaka) and Upper Tanawal, Batagram district and Allai, Shangla, Buner, Tank and Hangu and Tehsils Balakot and Kalam. Candidates from these areas can also apply against Open merit seats. To be considered on open merit as well as quota seats, the candidates must apply against both categories through separate admission forms. However, it will be the choice of the candidate to avail open merit or Backward area seat. The candidates applying against Backward Area Seats in Khyber Pakhtunkhwa Medical and Dental Colleges shall apply to the Chairman JAC on prescribed forms, along with all required certificates/documents duly verified by the concerned DC and DEO and concerned Principals/Head masters of schools and colleges. Applicants submitting false/forged/fabricated documents will be held directly accountable and their admission will be withdrawn/cancelled along with registration of FIR.
	CRITERIA OF ELIGIBILITY FOR BACKWARD AREAS OF KHYBER PAKHTUNKHWA
1.	The candidate and his/her father must be having a valid domicile certificate of the Backward area against which he/she is submitting the application and if father is not alive then the mother's valid domicile of the backward area will be considered.
2.	i. The candidates must have obtained education from class-I till F.Sc (complete sessions) including SSC with science and F.Sc premedical from the institutions within the concerned backward area of Khyber Pakhtunkhwa and have passed examinations from the same institutions, provided such facilities exist in the area. ii. In case where there are no facilities within the concerned Backward area of SSC with science and F.Sc Pre Medical, the candidate must have obtained his/her primary and middle education from the respective backward area, provided the candidate has obtained SSC with Science and F.Sc Premedical from the area nearest to their backward area and in case no candidate is available from the area nearest to that backward area, then from within the District of domicile. iii. In case of non-existence of school/college or non-availability of the facility for teaching science subjects, the candidate will have to provide a

	<p>solid proof in the form of a certificate duly verified by the concerned DEO (Education) and countersigned by the concerned DC of the concerned district.</p> <p>iv. In case any candidate who has obtained part of his/her education from outside the concerned backward area or area of domicile, provided such facilities exist, will not be considered as inside candidate.</p> <p>v. The candidate applying for backward area seat will have to provide a solid proof in the form of a certificate (as per specimen given on page 68) duly verified by the concerned DEO (Education) and countersigned by the concerned DC of the concerned district.</p> <p>vi. In case of non-availability of candidates fulfilling the above mentioned criteria, the selection will be made on merit from amongst the candidates on the basis of maximum education obtained from the concerned backward area.</p> <p>vii. The candidates must have appeared in the prescribed Entrance Test for admission to Public sector Medical & Dental Colleges in Khyber Pakhtunkhwa.</p> <p>viii. Students selected on Backward Areas quota seats should sign surety bond of not less than five years, stating that after completion of education, they shall perform duty in their home districts for at least 5 years. Any violation will result in their payment of an amount equal to self-finance seat, with compounding interest rate. This money will be recovered as arrears of land revenue, in case of non-payment.</p>
	<p>Note: All admissions will be based on the location certificate provided by the concerned DC and DEO and Joint Admission committee will not be responsible for omission or commission if any in the location certificate or any other document/information as provided by the candidate.</p>
V	<p>QUOTA SEATS FOR DISABLED CANDIDATES:</p> <p>The disabled candidates selected by the "Disability Committee" with a valid domicile of Khyber Pakhtunkhwa / FATA of the candidate and his/her father and fulfilling all the other criteria for admission to Khyber Pakhtunkhwa Medical/ Dental colleges can apply on these seats. In case father of the candidate is not alive then the mother's valid domicile of Khyber Pakhtunkhwa / FATA will be considered.</p> <p>To be considered on open merit as well as disabled candidates seats, the candidates must apply against both the categories.</p> <p>However, it will be the choice of the candidate to avail open merit or disabled seat.</p> <p>The disabled candidates are required to provide a registration certificate from the Social Welfare Department Government of Khyber Pakhtunkhwa, stating that:</p> <ul style="list-style-type: none"> ❖ He/She is a disabled candidate, But ❖ He/She is mentally fit and physically able to carry out his/her studies and can perform professional duties after qualifying M.B.B.S./BDS.
	<p>The disabled candidate will be required to produce a certificate from a Government certified specialist as per attached proforma in the prospectus (as per specimen on page 67)</p> <p>Such certificate will only make him/her eligible to apply against the reserved seats for disabled.</p> <p>A Medical Board constituted by Chairman JAC will make final decision about the suitability of the candidate for admission against the reserved seats.</p>
	<p>ELIGIBILITY CRITERIA FOR DISABILITY:</p>
a.	<p>Disability for the purpose of admission to Medical & Dental Colleges in Khyber Pakhtunkhwa is defined as that degree of physical impairment which puts the candidate at disadvantage as compared to a normal person for acquiring education before entering Medical/Dental College, but otherwise is capable of performing his/her duties satisfactorily as a Medical/Dental student and later on as Medical/Dental Practitioner. The terms "severely disabled and comparison of disabilities" are not applicable because:-</p> <p>i. A severely disable person is ineligible.</p> <p>ii. Disease/ disabilities affecting different organ systems are in no way comparable.</p>
b.	<p>The disability shall be of permanent nature.</p>
c.	<p>The candidate shall be declared disabled by the Medical Board for disabled candidates.</p>
d.	<p>The Medical Board will issue a certificate of disability.</p>
e.	<p>In case of any dispute regarding the decision of Medical Board, an appeal should be made within 48 hours before the Appellate Medical Board. The decision of the Appellate Medical Board shall be final.</p>
f.	<p>Selection against these seats will be done by JAC on merit from amongst the certified disabled candidates.</p>
	<p>MEDICAL BOARD TO EXAMINE THE DISABLED CANDIDATES</p>
1.	<p>Medical Specialist</p>
2.	<p>Surgical Specialist</p>
3.	<p>ENT Specialist</p>
4.	<p>Eye Specialist</p>
5.	<p>Orthopedic Specialist.</p>
6.	<p>Psychiatrist</p>
7.	<p>The Chairman JAC may co-opt any other specialist relevant to the disability as member, on need basis.</p>

	<p>APPELLATE MEDICAL BOARD FOR DISABLED CANDIDATES</p> <p>In case of any dispute regarding disability, an appeal should be made within 48 hours to the Appellate Medical Board. The Appellate Board will comprise of the serving / retired Professors of all the concerned specialties and will be constituted by the Chairman Joint Admission Committee. The decision of the Appellate Medical Board shall be final, after approval of Chairman Joint Admission Committee.</p>
	<p>RECIPROCAL SEAT:</p> <p>Nomination against this seat will be made by the JAC from amongst the candidates of the open merit list on merit cum choice.</p>
	<p>MINORITIES SEAT:</p> <p>These candidates can also apply for open merit seats, however it will be the choice of the candidate to avail open merit or reserved seat. Minority candidates can apply against this seat if they are fulfilling the other criteria for admission to Khyber Pakhtunkhwa Public sector Medical/Dental colleges.</p> <p>Admission against this seat will be made by the JAC from amongst the merit list of the qualified minority candidates.</p> <p>The candidate and his/her father must be domiciled of Khyber Pakhtunkhwa/ FATA. In case father of the candidate is not alive then the mother's valid domicile of Khyber Pakhtunkhwa / FATA will be considered.</p>
	<p>B. FEDERAL RESERVE AND QUOTA SEATS:</p>
I.	<p>FATA RESERVED SEATS</p>
1.	<p>FATA seats include all seats reserved in Medical and Dental Colleges of Khyber Pakhtunkhwa and other Provinces. Out of the total reserved seats for FATA:</p> <ol style="list-style-type: none"> Ten percent seats are reserved for candidates who have obtained their Primary, Middle, SSC (Science) & F.Sc (Pre-medical Part-I & Part-II) education from institutions within FATA while, Ninety percent seats will be shared between the candidates who have passed SSC (Science), FSc (Pre-medical) from institutions located both inside and outside FATA. Any candidate who has obtained part of his/her education outside FATA, will not be considered as inside candidate. In case of nonexistence of school/college or non-availability of the facility for teaching science subjects, the candidate will have to provide a solid proof in the form of a certificate (as per specimen given on page 67) duly verified by the concerned DEO (Education) and countersigned by the concerned PA (Agencies) and DC (FRs). In case a candidate nominated against FATA reserved seat does not avail the facility for which he has been nominated; the Nominating Agency should be informed by him/her immediately, failing which a penalty of debarring for one/two years will be imposed on the defaulter candidate(s) for his/her future selection/ nomination against reserved seats. <p>2. The candidates applying against FATA reserved seats in Khyber Pakhtunkhwa Medical and Dental Colleges as well as elsewhere in Pakistan shall apply to the Chairman JAC on prescribed forms as well as submit a photocopy of admission form along with attached documents in the FATA Secretariat, Khyber Pakhtunkhwa, Peshawar whose concerned authorities will verify the documents especially the domicile.</p> <p>3. The Joint Admission Committee will finalize the merit list of FATA candidates on the basis of <i>inter se</i> merit. Seat distribution/allocation within the FATA shall be responsibility of SAFRON/FATA Secretariat KPK provided it does not exceed the allotted quota.</p> <p>The candidates must fulfill the following criteria:</p> <ol style="list-style-type: none"> Possess valid FATA domicile certificate. His/her father must possess a valid domicile of FATA. In case father of the candidate is not alive then the mother's valid domicile of FATA will be considered. Have appeared the Entrance test for admission to Khyber Pakhtunkhwa Medical & Dental Colleges for the current session. Fulfill all other criteria laid down for admission in Khyber Pakhtunkhwa Medical & Dental Colleges.
II.	<p>FATA/ BALOCHISTAN PROJECT SEATS</p> <p>The seats have been created under the project titled Provision of Higher Education Opportunities for Balochistan & FATA,</p> <p>The candidates applying against FATA/ Balochistan Project seats reserved in Khyber Pukhtunkhwa Medical and Dental Colleges, shall directly apply to Higher Education Commission on the prescribed form. The HEC shall finalize the list of candidates to be admitted as per Policy formulated for the said project. Nomination of candidates shall be sent by HEC, Islamabad to the JAC through Secretary Health, Government of Khyber Pakhtunkhwa. In order to avoid duplication on rest of FATA reserved seats HEC will invite FATA Secretariat while awarding scholarships to these candidates.</p> <p>Any subsequent shifting will be the responsibility of JAC; rule no. 16 of admission policy shall apply.</p>
	<p>FATA/ BALOCHISTAN PROJECT SEATS</p> <p>The seats have been created under the project titled Provision of Higher Education Opportunities for Balochistan & FATA,</p> <p>The candidates applying against FATA/ Balochistan Project seats reserved in Khyber Pukhtunkhwa Medical and Dental Colleges, shall directly apply to Higher Education Commission on the prescribed form. The HEC shall finalize the list of candidates to be admitted as per Policy formulated for the said project. Nomination of candidates shall be sent by HEC, Islamabad to the JAC through Secretary Health, Government of Khyber Pakhtunkhwa. JAC would be responsibility sor subsequent shifting if any of these candidates. In order to avoid duplication on rest of FATA reserved seats HEC will invite FATA Secretariat while awarding scholarships to these candidates.</p>

III.	<p>SEATS RESERVED FOR AJK & GILGIT BALTISTAN (NORTHERN AREAS)</p> <p>The AJK & Gilgit Baltistan (Northern Areas) seats include all seats reserved in Medical and Dental Colleges of Khyber Pakhtunkhwa for candidates from AJK & Gilgit Baltistan (Northern Areas).</p> <p>The candidates seeking admission from AJK & Gilgit Baltistan (Northern Areas) against the seats reserved in Khyber Pakhtunkhwa Medical/ Dental Colleges should apply to Secretary Nomination board Muzaffarabad and Director of Education Gilgit Baltistan (Northern Areas) respectively.</p> <p>The candidates must fulfill the following criteria:</p> <ol style="list-style-type: none"> The candidate and his/her father shall possess Gilgit Baltistan (Northern Areas) valid domicile certificate/ AJK valid state subject certificate/ domicile certificate. In case father of the candidate is not alive then the mother shall possess Gilgit Baltistan (Northern Areas) valid domicile certificate/ AJK valid state subject certificate/ domicile certificate. The nominated candidates must have appeared in the Entrance Test conducted by the Government of Khyber Pakhtunkhwa for admission for the current session and have obtained at least 60% unadjusted marks in their F.Sc. (Pre-Medical) or equivalent examination. Fulfill all other criteria laid down for admission in Khyber Pakhtunkhwa Medical & Dental Colleges. <p>The selected candidates of AJK/ Gilgit Baltistan (Northern Areas) must report to the Dean/Principal of the concerned Medical/Dental Colleges of Khyber Pakhtunkhwa before the closing date of admission.</p>
	<p>ELIGIBILITY CRITERIA FOR OVERSEAS STUDENTS:</p> <ol style="list-style-type: none"> The candidate who has passed an examination equivalent to intermediate level of Pakistan from a foreign education system with three science subjects out of which Biology and Chemistry are essential subjects with 60% marks in each as certified by IBCC is eligible to apply for admission in MBBS/BDS. On open merit seats no admission shall be given except through the provincial entry test. On foreign seats only and not on open merit seats, in lieu of the entry test of the admission authority, the candidates is required to have passed SAT II examination score with minimum 550 marks in each of the three science subjects out of which Biology and Chemistry are essential subjects as per criteria laid down by IBCC for Pre-medical group. The candidate is required to present a valid TOEFL or IELTS with a score of 500 or 5.5 respectively only if the medium of instruction of study 6 years prior to application for admission/entry test is not English. <p>An alternate to TOEFL and IELTS is a certification by NUML Islamabad after a one year English language course.</p>
III	<p>FOREIGN QUOTA SEATS</p> <ol style="list-style-type: none"> Technical Assistance Program Seats Foreign Self-Finance Seats
a.	<p>PAKISTAN TECHNICAL ASSISTANCE PROGRAM SEATS</p> <p>An applicant will be eligible for the said seats subject to following conditions:</p> <ol style="list-style-type: none"> The applicant holds a valid foreign nationality. The applicant must have physically studied and passed HSSC/ equivalent (Pre-medical) examination from outside Pakistan during his/her stay abroad, having a certificate from the Institution last attended. <p>The applicant must also fulfill the criteria laid down by Economic Affairs Division, Ministry of Economic Affairs & Statistics, Government of Pakistan Islamabad.</p> <ol style="list-style-type: none"> The applicant should also fulfill the admission criteria of public sector medical/dental colleges of Khyber Pakhtunkhwa. <p>Foreign candidates seeking admission under Technical Assistance Program in Khyber Pakhtunkhwa Medical/Dental colleges shall submit their applications through their own Government/Embassy to the Economic Affairs Division Government of Pakistan Islamabad which will make on merit necessary selection and allocation. The names of the selected candidates for MBBS/BDS course under Technical Assistance Program seats will be communicated directly to the concerned college by the Economic Affairs Division, Government of Pakistan, Islamabad with a copy to Secretary Health, Government of Khyber Pakhtunkhwa, for endorsement. The candidate who has passed an examination equivalent to intermediate level of Pakistan from a foreign education system with three science subjects i.e., Physics, Chemistry and Biology with 60% marks as certified by IBCC is eligible to apply for admission in MBBS/BDS. Subject wise equivalence by IBCC shall be acceptable. The final nomination against these seats must reach the concerned medical college before the open merit interviews.</p> <p>The selected candidates against these seats must reach the concerned college 15 days before the start of classes.</p>
b.	<p>FOREIGN SELF FINANCE SEATS:</p> <p>The applicant will be eligible for admission on Foreign Self-finance seats if:</p> <ol style="list-style-type: none"> He/she holds a valid foreign nationality and also fulfills the admission criteria laid down by Higher Education Commission, Government of Pakistan, Islamabad. He/she should also fulfill the admission criteria of Khyber Pakhtunkhwa public sector Medical/Dental colleges. <p>Foreign Candidates seeking admission against foreign Self-Finance seats in Khyber Pakhtunkhwa Medical/ Dental Colleges shall submit their applications through their own Government/Embassy to Higher Education Commission, Government of Pakistan, Islamabad who will make on merit cum choice necessary selection and allocation of seat.</p> <p>Nomination of the selected candidates for MBBS/BDS course against foreign seats will be communicated to the college concerned directly by Higher Education Commission, Government of Pakistan, Islamabad with a copy to Secretary Health, Government of Khyber Pakhtunkhwa.</p> <p>The selected candidates against these seats must reach the concerned college at least 15 days from start of classes.</p>

Any subsequent shifting will be the responsibility of JAC; rule no. 16 of admission policy shall apply.	
SEATS FOR OVERSEAS PAKISTANIS OF KHYBER PAKHTUNKHWA / FATA DOMICILE (OPF SEATS):	
<p>The candidates seeking admission against the seats reserved for children of overseas Pakistanis Khyber Pakhtunkhwa Medical & Dental Colleges shall have to apply through the Ministry of Labour, Manpower and Overseas Pakistanis, Government of Pakistan, Islamabad in addition to their direct application to the Chairman JAC.</p> <p>The candidate must have domicile of Khyber Pakhtunkhwa/FATA.</p> <p>ii. The candidate must have appeared in the Khyber Pakhtunkhwa Medical & Dental Colleges Entrance Test for the current session and have obtained at least 60% unadjusted marks in their F.Sc Pre-Medical or equivalent examination.</p> <p>iii. The candidate's Father / Mother must have valid OPF Membership and Foreign Exchange Remittance Card.</p> <p>iv. The candidates seeking admission against the reserved seats must fulfill the requirements laid down by the Ministry of Labor and Manpower, Government of Pakistan.</p> <p>The application should be recommended to the Chairman JAC through the concerned Ministry. The JAC will finalize the admission on prescribed merit.</p> <p>The OPF candidates from Khyber Pakhtunkhwa and FATA applying for these seats can also apply on general open merit and FATA seats respectively.</p>	
AFGHAN NATIONAL SEATS:	
<p>The candidates seeking admission against the reserved Afghan National Seats, in Khyber Pakhtunkhwa Public Sector Medical and Dental Colleges shall submit their applications to Ministry of Inter Provincial Coordination (IPC), Government of Pakistan, and Islamabad through the Embassy of Pakistan in their own country or through Afghan Embassy in Pakistan.</p> <p>The candidate must fulfill the following criteria:</p> <ol style="list-style-type: none"> 1. The applicant and his/her father hold a valid Afghan nationality at the time of admission. 2. The applicant must have passed Higher Secondary School or equivalent examination from foreign education system with three science subjects with minimum 60% marks as certified by <i>Inter Board Committee of Chairmen (IBCC)</i> Islamabad. 3. The applicant must have appeared in the provincial entrance test or passed SAT II with minimum 550 marks in each of the three science subjects as per criteria laid down by IBCC for Pre-medical group. 4. The applicant is required to present a valid <i>Test of English as a Foreign Language (TOEFL)</i> or International English Language Testing System (IELT) with a score of 500 or 5.5 respectively only if the medium of instruction of study 6 years prior to application for admission/entry test is not English. 5. An alternate to TOEFL and IELT is a certification by <i>National University of Modern Languages (NUML)</i> Islamabad after a one year English language course. 6. The applicant shall fulfill all other criteria laid down for admission in Khyber Pakhtunkhwa Medical/Dental colleges. <p>All applications along with the attested photocopies of the relevant documents of the candidate must reach the Chairman Joint Admission Committee Public Sector Medical and Dental Colleges of Khyber Pakhtunkhwa through Ministry of Inter Provincial Coordination (IPC), Government of Pakistan, and Islamabad at least 15 days before start of classes. The merit of the candidate will be determined according to the criteria of PM&DC. Admission will be given on the merit cum choice basis.</p>	
NOTE:	
1.	If a candidate remains absent at the time of interview for admission, he/she will lose the right of admission in Public sector Medical/ Dental Colleges of Khyber Pakhtunkhwa.
2.	If at the time of interview, an eligible candidate is not present for any quota/ reserve seat, the seat/seats will be converted to open merit unless a very genuine reason for absence from interview on the due date is presented to the Chairman JAC at the time or within 24 hours after the date of interview of the candidate, who will have the final authority to decide the case on merit.

QUALIFICATIONS AND OTHER CRITERIA FOR ADMISSION

All the candidates applying for admission in MBBS/ BDS courses in the Khyber Pakhtunkhwa public sector Medical/Dental Colleges, Fatima Jinnah Medical College Lahore (for girls only) & other Medical and Dental Colleges outside Khyber Pakhtunkhwa (for FATA and reciprocal seats) must fulfill the following requirements.									
Eligibility Criteria for Candidates									
I	Qualifications:								
	The candidates applying for admission against any category of seats must have passed the F. Sc. (Pre-Medical) examination from a Board of Intermediate and Secondary Education in Pakistan in 1st Division with at least 60% unadjusted marks. OR Passed an examination of Foreign University/Board other than Afghanistan (except Afghan National seats) which in scope and standard is found equivalent to the F.Sc (Pre-Medical) examination of Pakistan, subject to the following:								
i.	The examination is recognized as equivalent to F.Sc (Pre-Medical) by the Inter Board Committee of Chairmen (IBCC), Islamabad. It shall be the responsibility of the candidates to settle their cases with IBCC and should get clearance certificate from IBCC, Islamabad for recognition of their qualifications.								
ii.	The equivalence certificate must be attached with the application form before the final closing date.								
iii.	Provisional equivalence certificate issued by the IBCC may be entertained for sitting in the Entrance Test as well as for admission. However, confirmation of candidate's admission will be subject to production of attested photocopy equivalence certificate issued by the IBCC.								
iv.	The candidate has obtained marks equivalent to unadjusted 60% of F.Sc total marks according to the formula laid down by the IBCC, Islamabad.								
v.	The equivalence certificates of such candidates will not be accepted if he/she has not studied and passed the subjects of Physics, Chemistry and Biology in his/her 9th, 10th, 11th and 12th Grade / O & A levels or other equivalent examination recognized by the IBCC. He/she must have passed English as a subject at O or A level.								
vi.	Only the Converted Marks Certificates issued by the IBCC will be accepted. The equivalence of marks will be on the basis of a certificate issued by IBCC.								
II.	Entrance Test and determination of merit:								
1.	There is an Entrance Test as per the requirement of PM&DC for admission to MBBS/ BDS in Public Sector Medical and Dental Colleges in Khyber Pakhtunkhwa. The date, time and venue for Entrance Test will be notified in the national daily newspapers. Any change in schedule of Entrance Test will be notified in press and on the websites of ETEA/KMU and other Public sector Medical/Dental colleges of Khyber Pakhtunkhwa.								
2.	All candidates who have obtained at least 60% unadjusted marks in their F. Sc. (Pre-medical) examination or equivalent foreign examination, are eligible to apply for admission.								
3.	Entrance Test registration will be done online. The information regarding this will be displayed on Khyber Medical University website.								
4.	The Test will be held in the following subjects of F. Sc. (Pre-Medical): i. Physics ii. Chemistry iii. Biology iv. English (general for language proficiency)								
5.	The candidate will be issued Entrance test card after registration on the KMU website. Online registration for Entry Test can be done on the KMU website even if the FSc result is not declared. However, the original certificate will have to be submitted with the application form at the time of admission in Khyber Medical College.								
6.	All admissions in Khyber Pakhtunkhwa Medical & Dental Colleges against Pakistan Technical Assistance Program Seats, and Foreign Self-Financing Seats will be done as per policy approved and notified by Economic Affairs Division and routed through Higher Education Commission, Government of Pakistan, Islamabad.								
7.	Weightage for preparation of final merit list will be as under:- <table> <thead> <tr> <th>EXAMINATION / TEST</th><th>WEIGHTAGE</th></tr> </thead> <tbody> <tr> <td>SSC or equivalent level examination</td><td>10%</td></tr> <tr> <td>Adjusted marks in F.Sc or equivalent examination</td><td>40%</td></tr> <tr> <td>Entrance Test</td><td>50%</td></tr> </tbody> </table> <p>The Entrance Test papers will be of MCQ type and will consists of: 1. Biology 60 Questions 2. Chemistry 60 Questions 3. Physics 60 Questions 4. English 20 Questions The Entrance Test will be from the entire F. Sc. course in the above-mentioned subjects except for English.</p> <p>EXAMPLE: A candidate has obtained marks: i. SSC or Equivalent qualification 650/850 or 76.5% ii. Adjusted F. Sc. marks or equivalent level marks 870/1100 or 79.1%</p>	EXAMINATION / TEST	WEIGHTAGE	SSC or equivalent level examination	10%	Adjusted marks in F.Sc or equivalent examination	40%	Entrance Test	50%
EXAMINATION / TEST	WEIGHTAGE								
SSC or equivalent level examination	10%								
Adjusted marks in F.Sc or equivalent examination	40%								
Entrance Test	50%								

	iii. Entrance Test Marks 460/800 or 57.5 % His/ Her merit will be calculated as follows: <table><tr><td>%age mark Weightage</td><td>=</td><td>Weightage Factor Marks</td><td></td></tr><tr><td>a. Weightage for SSC</td><td>=</td><td>76.5 x 0.1</td><td>= 7.65</td></tr><tr><td>b. Weight age for F.Sc</td><td>=</td><td>79.1 x 0.4</td><td>= 31.64</td></tr><tr><td>c. Weight age for Entrance Test</td><td>=</td><td>57.5 x 0.5</td><td>= 28.75</td></tr><tr><td>Merit score of the candidate</td><td>=</td><td>a+b+c = 7.65+31.64+28.75</td><td>= 68.04</td></tr></table> Final calculation in percentage will be rounded up to two decimal points.	%age mark Weightage	=	Weightage Factor Marks		a. Weightage for SSC	=	76.5 x 0.1	= 7.65	b. Weight age for F.Sc	=	79.1 x 0.4	= 31.64	c. Weight age for Entrance Test	=	57.5 x 0.5	= 28.75	Merit score of the candidate	=	a+b+c = 7.65+31.64+28.75	= 68.04
%age mark Weightage	=	Weightage Factor Marks																			
a. Weightage for SSC	=	76.5 x 0.1	= 7.65																		
b. Weight age for F.Sc	=	79.1 x 0.4	= 31.64																		
c. Weight age for Entrance Test	=	57.5 x 0.5	= 28.75																		
Merit score of the candidate	=	a+b+c = 7.65+31.64+28.75	= 68.04																		
8.	The result of the test will be valid for the current academic year only. The result of the previous year (s) will not be considered for the subsequent year(s) and the candidate will have to reappear in the entrance test if he/she desires to apply for the current admission session.																				
9.	The result of the Entrance Test when declared will be displayed on the websites of ETEA and KMU. Provisional and then the Final merit lists will be displayed on the Khyber Medical Colleges' website and notice boards as soon as it is ready.																				
10.	A candidate appearing in the entrance test cannot claim admission against any seat unless he/she fulfils the other criteria specified in this admission policy.																				
III.	AGE There is no lower or upper age limit for admission in public sector Medical/Dental colleges of Khyber Pakhtunkhwa. Whenever two or more candidates are bracketed equal in the final merit list, the older candidate will be preferred over younger one. In case the tie continues, the one having better marks in Matric shall be considered. If the tie still continues, then the candidate with better marks in entrance test will be given preference.																				
C.	ADMISSION OF THE CANDIDATE WILL BE CANCELLED IF:																				
1.	It is found at any stage of MBBS/ BDS course that the candidate was not entitled for admission according to the Public Sector Medical/ Dental Colleges Khyber Pakhtunkhwa admission policy.																				
2.	The candidate is found medically unfit at any stage of MBBS/BDS course.																				
3.	The candidate fails to report for admission and fails to deposit the fee on due date.																				
4.	Any document, information provided by candidate is found false/fake or fabricated at any stage of MBBS/BDS course which would have rendered him/her ineligible for admission under the rules.																				
5.	It is found that candidate was not entitled for admission in preference to the other candidates who applied for admission at any stage of MBBS/BDS course.																				
	DOCUMENTS REQUIRED WITH APPLICATION FORM Applicants must attach with application form attested photocopies of the following certificates and documents. The documents & certificates must be attested by a gazetted Government servant. The stamp of the officer must bear his/her full name, designation and current place of duty. Selected candidates shall have to submit all original certificates at the time of interviews/admission. The original documents of the selected candidates will be retained by the College concerned and will be returned on leaving the Institution. (The application forms and photocopies of the documents submitted by the candidates not selected will not be returned to them).																				
i.	Two Copies of Detailed Marks Certificate of the examination on the basis of which admission is sought.																				
ii.	An equivalence certificate from the Inter Board Committee of Chairmen, Islamabad, if the qualifying certificate is from an Institute abroad.																				
iii.	Hafiz-e-Quran certificate from a Registered Madrassa if the candidate claims to be Hafiz-e-Quran.																				
iv.	Matric / Secondary School pass Certificate (Science / equivalent).																				
v.	Migration Certificate from the respective board (only from admitted candidates)																				
vi.	a. Disability registration certificate from Social and Welfare Department, Government of Khyber Pakhtunkhwa b. Disability medical certificate on prescribed proforma from concerned certified specialist if applying against seats reserved for the disabled.																				
vii.	Two Copies of valid Domicile certificate of Khyber Pakhtunkhwa/ FATA of the candidate and his/ her father. (Place of Domicile entered in the online registration form on KMU website and the one produced with the admission form must be the same, otherwise the candidate shall be deemed disqualified).																				
viii.	A copy of Domicile certificate of the father of the applicant; if the father is not alive, then the death certificate of the father along with the domicile certificate of the mother has to be submitted.																				
ix.	A copy of Computerized National Identity Card of the candidate or Computerized Registration Form.																				
x.	A copy of Computerized National Identity Card of the father of the applicant; if the father is not alive, a copy of the National Identity Card of the mother or guardian.																				
xi.	A copy of Parent's valid OPF Membership Card and Foreign Exchange Remittance Card (Valid on the closing date of application form for admission) in case of candidates applying against Overseas Pakistani's Seats.																				
xii.	A copy of Attempt certificate from the concerned BISE if the period between SSC and F.Sc. is more than two academic years.																				
xiii.	Original Undertaking on judicial stamp paper of Rs. 35/- duly attested by Notary Public/ Political Agent as per specimen given in the prospectus/ admission form.																				

xiv.	Three passport size colored photographs of the applicant attested on the back.
xv.	Certificate of location of educational institutions from Principals/ Head Masters of the concerned institutions have to be submitted by the candidates of FATA and backward areas.
xvi.	Course completion certificate from the school/ college Principal/Head Master shall be attached.
xvii.	The certificate must be countersigned by the DEO and DC of the concerned district and Political Agent of the agency.
xviii.	Certificate from the Institution last attended with duration of stay.
xix.	In case, the candidate has obtained F.Sc part-I and part-II education from different institutions he/she has to produce a certificate indicating the institution from where F. Sc. Part-1 and Part-II have been obtained.
WARNINGS	
1.	If any document / information provided by candidate, is found false/fake or fabricated at any stage of MBBS / BDS course, the admission will be cancelled.
2.	Incomplete application forms will be rejected.
3.	The domicile, DMC of F.Sc. (Pre-Medical)/Equivalent Examination, SSC and other certificates once submitted with the entry test form cannot be changed and shall be considered as final. Revision of result or improvement of marks by the board/IBCC after the finalization of merit list shall not affect the merit list of admission of current year in any way.
4.	All the above-mentioned certificates issued after the dates fixed for receipt of application forms shall not be entertained.
5.	Application forms with any false statement by the candidate will be rejected.
6.	If any certificate submitted by the candidate is found false, or forged during his/her study period, his/her admission shall be cancelled forthwith and he/she shall be blacklisted for admission to any professional colleges in Khyber Pakhtunkhwa. Further legal action can be taken against the student under the existing criminal laws.
SCRUTINY COMMITTEE:	
The Chairman Joint Admission Committee will constitute a scrutiny committee, comprising of representatives from all the public sector medical/ dental colleges which will scrutinize the documents of all candidates.	
ADJUSTMENT OF MARKS	
The following marks will be added/ deducted from the total marks of F. Sc. obtained by the candidate in order to calculate the adjusted marks. The addition or deduction shall not change the eligibility (60% in F.Sc) of the candidate.	
1.	Only Ten (10) marks will be deducted for extra attempt availed in F.Sc examination by the candidate to improve marks beyond the period of two years after passing the SSC/ Matric annual or supplementary examination. The original attempt certificate issued by the respective BISE shall be accepted as final proof of improving marks.
2.	If the applicant does not submit the attempt certificate, his/her marks will be deducted according to the gap between SSC & F.Sc examinations.
3.	Ten percent (10%) weightage shall be given to marks obtained by the candidate in SSC (Science) or equivalent examination according to the percentage of marks obtained in the said examination.
4.	If a candidate has not passed his/her SSC (Science) or equivalent examination of Pakistan Boards, he/she will have to produce Matric equivalence certificate from IBCC, Islamabad.
5.	Twenty (20) marks will be added to F. Sc. marks of a candidate who is Hafiz-e- Quran on the recommendation of "Committee for Hafiz-e-Quran".
COMMITTEE FOR TESTING THE CANDIDATES CLAIM FOR HAFIZ-E-QURAN	
The Chairman JAC will constitute a four members committee of Senior Teachers and Hafiz-e-Quran. Two of the four members will be Hafiz-e-Quran to be nominated by the Dean faculty of Islamic Studies Peshawar. This committee will test the validity of the claim of the candidate. The decision of the committee will be by consensus.	
APPELLATE COMMITTEE FOR HAFIZ-E-QURAN	
If a candidate is not satisfied with the decision of the committee for Hafiz-e-Quran, he/she can appeal to the Appellate Committee for Hafiz-e-Quran (within 48 hours) which will be constituted by the Dean Faculty of Islamic Studies, University of Peshawar on the request of the Chairman JAC.	

SELECTION AND ADMISSION OF APPLICANTS

The JAC will consist of the following:	
1. Dean, Khyber Medical College, Peshawar	Chairman
2. Dean, Ayub Medical College, Abbottabad.	Member
3. Dean, Khyber College of Dentistry, Peshawar.	Member
4. Dean, Gomal Medical College, D.I. Khan	Member
5. Principal, Saidu Medical College Swat.	Member
6. Dean, Khyber Girls Medical College, Peshawar.	Member
7. Dean, Bannu Medical College, Bannu.	Member
8. Dean, Bacha Khan Medical College, Mardan	Member
9. Dean, Nowshera Medical College, Nowshera.	
10. Principal, Gajju Khan Medical College, Swabi	Member
11. Director Admission	Member
Note: In case of inability of the Principal/Dean to attend the meeting Vice Principal/Associate Dean of the concerned institution will attend the meeting.	
ADMISSION PROCEDURE	
1.	The Joint Admission Committee shall call applications for admission to MBBS/BDS. The admission/scrutiny committee shall process all valid applications and attached documents.
2.	The Chairman JAC / Dean KMC will display a merit list for each category of candidates. Objection, if any, be submitted in writing to the Chairman JAC who will be competent to rectify any error or omission FIVE DAYS before the interviews are held. The final merit list will be displayed two days before the start of interviews.
3.	The JAC will interview the candidates for Khyber Pakhtunkhwa Backward areas, Special Quota Seats, Khyber Pakhtunkhwa Girls seats at FJMC, Lahore, Reciprocal seat at NMC, General Self Finance Seats, FATA seats, and seats for Overseas Pakistani with Khyber Pakhtunkhwa domicile.
4.	All admission under all categories will be closed automatically after the expiry of sixty days from commencement of the first day of interviews in the respective Medical/Dental college. This shall apply to all categories seats including federal reserved seats.
5.	The candidates of the following cadres will be recommended by the respective nominating departments according to the criteria as specified in the admission policy. <ol style="list-style-type: none"> Pakistan Technical Assistance Program Seats. Afghan National seats Foreign self finance seats AJK seats GilgitBaltistan (Northern Areas) seats. Special FATA/ Balochistan Project seats
6.	The JAC will finalize the merit list of FATA candidates on the basis of criteria laid down jointly by the JAC, FATA Secretariat & SAFRAN. Selection will be subject to rules framed by the Federal Government/ FATA Secretariat.
7.	Representatives of Civil Secretariat FATA and SAFRAN will participate in the deliberation of the JAC when the merit list against FATA Seats is finalized.
8.	The final selection of candidate against the reserved seat for FATA in different Colleges in Khyber Pakhtunkhwa and other provinces will be notified by the FATA Secretariat/ SAFRAN.
9.	Appeal against the decision of JAC for admission on FATA reserved seats can be made to the appellate committee through the FATA Secretariat, Peshawar.
10.	Right of appeal against the decision of JAC or any of sub committees in case of process of admission on FATA reserve seats shall vest in the FATA Secretariat.
11.	No candidate will be admitted unless he/she has paid the fee and dues. All dues must be paid by the due date, otherwise next candidate on merit will be considered for admission.
12.	All admissions will be provisional. All certificates or any other documents submitted with the application form will be subject to verification. Any candidate whose documents are found incorrect or false / forged in any way, or whose authentication is doubtful rendering him/her ineligible for admission under the rules, will be struck off from the college roll and legal action may be taken under the criminal and civil law against him/her.
13.	The Principal can expel a student from the college roll at any time during the course of his/her study if incorrect or wrong data had been submitted by such a candidate/ parent/ guardian at the time of admission rendering him/her ineligible for admission under the rules.
14.	No show cause notice will be necessary for any action under this rule, nor would the Government, the Principal or any other authority be liable for damages for any action taken under this rule.
15.	Any cost of litigation accrued by the JAC /college(s) on account of law where the fault of the candidate is proved shall have to be paid by the candidate or his/her parent/guardian.

Khyber Pakhtunkhwa Medical & Dental Colleges

16.	Admission fee and other dues will not be refunded to those students whose admission has been cancelled due to his/her forged documents or rusticated/expelled/removed from the college roll for any reason or he /she willfully discontinues studies.
17.	A student who is admitted to the first year MBBS/BDS class of the Khyber Pakhtunkhwa Medical & Dental Colleges but is continuously absent from the beginning of the academic session for a period of four weeks without any valid reason shall be struck off from the college roll and his/her seat will be filled on the basis of merit from the waiting list.
18.	The Medical Board of the respective medical colleges will examine selected candidates. If a candidate is disqualified medically, he/she will not be admitted.
19.	A candidate once admitted in public sector Khyber Pakhtunkhwa Medical/ Dental College may be allowed to leave for another Medical/ Dental College in other province / country provided he/she applies for this purpose before the closing date of admission: — Those admitted in previous year(s) will not be allowed to do so. — Fee once paid shall not be refunded and any scholarship amount paid shall be recovered in such cases. — The undertaking given by the candidate on account of financial penalty shall also be enforced.
20.	Students already admitted in MBBS OR BDS on provincial seats, are eligible to reappear in the Entry Test if they have resigned/withdrawn their admission and paid the prescribed penalty (Rs. 50,000/- for open merit/ provincial quota seats and Rs. 2,00,000/- for general self finance) before appearing in entry test provided: i. The candidate will have to submit a certificate along with entrance test form, issued by the Principal of the college, to the effect that he/ she has paid all the previous dues including the penalty. ii. He/she has not been expelled/ debarred from the college under any provision of the Prospectus.
21.	The parent(s) or legal guardians must accompany all the candidates at the time of interview.
MIGRATION	
Migration from one public sector Medical / Dental college to another in Khyber Pakhtunkhwa will be governed by the following rules & regulations. Migration from one public sector Medical / Dental college to another in Khyber Pakhtunkhwa will be governed by the following rules & regulations.	
1.	Migration will be recommended by the JAC to the Health Department and no other forum will entertain any such request.
2.	Mutual migration is not allowed.
3.	Migration from abroad and private sector to public sector medical college is not allowed.
4.	Migration will only be allowed after passing 2nd Professional in MBBS and 1st Professional in BDS examination.
4.	No migration shall be allowed in violation of sanctioned strength of the class.
6.	In case of vacant seat in 3rd, 4th and Final professional of MBBS and 2 nd , 3 rd and Final Professional BDS class, the college administration will be bound to intimate JAC about number of vacant seats along with the total strength within 30 days of announcement of supplementary examination results respectively. Note: Vacant Seat for migration purpose means, any seat that becomes vacant due to death, expulsion, migration or cancellation of admission of any student due to any reason.
7.	Migration will be allowed only when a vacant seat is available in the total strength of the college as well as in the corresponding class as approved.
8.	Migration will be allowed only when the vacant seat is available in the corresponding class, overall strength of the college and category of seats in which the student is seeking migration.
9.	Migration will be allowed on merit among the applicants.
10.	Students seeking migration from one college to other shall fill the proforma as per specimen given at page no.-----along with the application for migration.
11.	All the applications along with the proforma shall be routed through the Dean/Principal of that college to which the student belongs.
12.	No case shall be processed without the applicant providing no objection certificate (NOC) of the Dean/Principal of the college from where he/she is migrating and to where he/she is seeking migration and of the PM&DC.
13.	The students shall mention in their migration application about category of seat i.e., either they are admitted against self-finance seat or FATA reserved seat. The same will be verified from the concerned college by the Health Department, Government of Khyber Pakhtunkhwa. The student hiding this information will be considered dis-qualified from migration.
14.	While allowing migration, the rules of PMDC must not be violated in any way.
15.	The migrating students must clear all the dues of the college where he/she remained for more than 6 months.
16.	The migration fee will be Rs. 50,000 for students who will be seeking migration from institutions within the province.
17.	The migration fee will be Rs. 1,00,000/- for students migrating from other provinces.
18.	The fee will be deposited in the college where migration is sought (recipient college).
19.	Category wise Migration is allowed to the students admitted against Open Seats, General self finance and against the reserved quota seats (Foreign Self Finance , FATA seats, FATA/Baluchistan Project seats, Technical Assistance Program seats, Backward Area seats, Minority Seat, Disabled seats, OPF seats). Category wise Migration means that a student will only have the right to migrate if the seat in the same category is lying vacant in which he was admitted
20.	Migration cases shall be decided on merit cum choice basis as per criteria mentioned in the proforma.

Note: Migration cases will be decided by the JAC as recommending body.	
ANNUAL TUITION FEE SCHEDULE The fees and subscription given in the prospectus of the Khyber Pakhtunkhwa Medical & Dental Colleges for current Session are payable by all the students of Medical and Dental Colleges from 1st year to Final year class irrespective of their year of admission. Revised fees structure will be applicable to all the candidates from time to time. Following is the Tuition Fee Schedule:	
I.	Nature of Seat(s): Category A (Normal fee paying seats): <ol style="list-style-type: none"> Open Merit seats Khyber Pakhtunkhwa Backward areas FATA Seats in Khyber Pakhtunkhwa Medical & Dental colleges Federal Reserved Seats for AJK/ Gilgit Baltistan (Northern Areas). Seats for the Disabled Students Minority Seats Federal Seats for Overseas Pakistanis of Khyber Pakhtunkhwa origin Students under Pakistan Technical Assistance Program and Foreign Nationals. FATA/ Balochistan Project seats.
II.	Category B (Self Finance Seats) a. General Self Finance Seats <ol style="list-style-type: none"> First Year MBBS/BDS = Rs. 400,000/- per annum Subsequent years = Rs. 400,000/- per annum The fee enhancement will be with immediate effect from session 2012-13 and having no retrospective effect. The enhanced fee will have no effect on candidates already admitted before the session 2012-13. Note: Concession of 50% of Fee will be given to the Children of Medical Teachers and employees working/ retired from Public Sector Medical/Dental Colleges/, selected under self finance on merit.
	b. Foreign Self Finance Seats: <ol style="list-style-type: none"> For MBBS US \$ 6,000/- per annum at the prevailing exchange rate at the time of preparation of the prospectus for the session 2018 – 2019 and shall be Rs. 696,000/= (Rs. 116 = One US \$). For BDS US \$ 6,000/- per annum at the prevailing exchange rate at the time of preparation of the prospectus for the session 2018 – 2019 and shall be Rs. 696,000/= (Rs. 116 = One US \$). Note: Concession of 50% of Fee will be given to the Children of Medical Teachers and employees working/ retired from Public Sector Medical/Dental Colleges/, selected under Foreign Self finance on merit. Afghan Nationals admitted through HEC under Prime Minister Scheme shall pay Rs. 600,000/ per year.
1.	Any student admitted against the General Self-finance seats if fails in a class would have to deposit Rs. 50,000/- for repeat academic year in which he/she fails. Subsequently, after promotion to next higher class he/she will pay the normal self-finance fee.
2.	Any student admitted against the Foreign Self-Financing seats etc. if fails in a class will have to deposit a fee of US \$ 1,000/- at the prevailing exchange rate at the time of preparation of the prospectus for the session 2018 – 2019 and shall be Rs. 116,000/= (Rs. 116 = One US \$) for repeating the academic year. Subsequently, after promotion to next higher class he/she will pay the normal fee for Foreign Self-Financing Students.
3.	All institutional charges including tuition fee, hostel fee and utility bills of the Significantly Physically Handicapped Students admitted in Public Sector Higher Education Institutions in Khyber Pakhtunkhwa are waived off by the Competent Authority. For the purpose of declaration of any candidate after selection on handicapped seat or becoming so handicapped thereafter as significantly physically handicapped there shall be a committee headed by a Professor to be nominated by the Chairman JAC and three other technical members preferably concerned with the nature of the handicapped.
4.	Any student who fails/ is detained in a professional examination both in annual and supplementary in any medical/dental subject shall not be promoted to the next higher class. He/she shall undergo the course of studies in the subject(s) in which he/she failed/ detained and will be required to complete at least 75% attendance in the same class in which he/she has failed. There will be no provisional promotion in any case.
5.	Students must clear all subjects before promotion to the next class.
6.	No candidate is allowed under any circumstances to appear in two professional examinations in one academic year.
7.	Students who do not clear 1 st Professional and 2 nd Professional examination of MBBS and 1 st Professional examination of BDS in four chances each will not be eligible for further medical studies in the country.
8.	All students must pay their fees/dues by the date(s) fixed by the Principal of the concerned college. If any student is unable to pay the dues on the due date, he/she must seek the permission of the Principal for extension of the last date of receipt of dues. If the fee is not paid one month after the due date, the defaulters in category A will be fined rupees 30/- per day, and those in category B will be

	fined Rs. 120 per day.
9.	If the defaulter fails to clear the dues 60 days after the last due date, the candidates name will be struck off from the college roll.
10.	The candidate may appeal to the college authorities for readmission in the same session. The college authorities may allow readmission on compassionate grounds only after payment of Rs. 10,000/- for category A students and Rs. 50,000/- for category B students. This will be in addition to the college normal fees and other subscriptions.
11.	Fines once levied will not be condoned
12.	The revenue generated from sale of Prospectus shall be utilized for student's welfare; 60% share of KMC and 40% distributed equally among other Public Sector Medical/Dental Colleges after excluding expenditure and honorarium, as approved by the Joint Admission Committee.

COLLEGE ADMINISTRATION

Each college is administered by a Dean/Principal who is appointed by Health Department, Khyber Pakhtunkhwa. He is helped by Associate Dean/Vice Principals, other senior faculty members of the college and the academic council.

The Principal will:

1. Carry out all academic, administrative and financial responsibilities assigned to him by the Health Department.
2. Represent the College at Institutional Management Council and other necessary forums.
3. Discharges all academic duties entrusted to him and deals with all the matters of academic interest in the Institution at all time.
4. Draw and promulgate the detailed teaching program for students in accordance with the decisions of the Academic Council and Pakistan Medical & Dental Council.
5. Approve the agenda of the meetings of the college Academic Council.
6. The Dean/Principal/ Associate Dean/Vice Principal will sign and issue academic certificates in respect of the students.
7. Preside over the various academic functions of the college.
8. Be responsible for the compilation of all medical education and research data in the institution.
9. Carries out all other duties that may be assigned to him from time to time by the Government/Institutional Management Council.

THE COLLEGE ACADEMIC COUNCIL

1. Each College will have an Academic Council which will consist of the whole time Professors & Heads of Teaching Units.
2. The Dean/Principal of the College will be the Chairman / Chairperson of the Council.
3. The Associate Dean/Vice-Principal Academics will be the Member/Secretary of the Council.

The College Academic Council:

- i. Will determine the requirements of the Medical and Dental education, evaluation and research in the light of rules and regulations of Pakistan Medical & Dental Council.
- ii. Will set standards and targets for Medical and Dental education and research for each department. (The council will try to do the necessary capacity building in each department to achieve the desired targets).
- iii. Will lay down policy and procedures for academic and clinical governance and support to students including students' career counseling.
- iv. Will facilitate the development of the College learning resources including a rich Library and strong IT support.
- v. Will be responsible for maintaining discipline in the college premises.
- vi. Will prepare and submit an annual performance report about the college at the end of each academic year.

ACADEMICS

A — COURSE OF STUDIES FOR MBBS STUDENTS

	The course of studies for MBBS is five academic years. The duration of the academic session will be 9 months including preparatory holidays and examination.	
	FIRST YEAR	Hours
1	Anatomy	350 hours
2	Physiology	350 hours
3	Biochemistry	200 hours
4	Islamic & Pakistan Studies	25 hours
5	Behavioral Sciences	25 hours
6	General Skills	15 hours
7	IT Skills	15 hours
8	Research Skills	15 hours
9	Community Medicine	25 hours
10	Medicine including Psychiatry & Dermatology	33 hours
11	Surgery including, Orthopaedics, Anaesthesia & Dentistry	32 hours
12	Obstetrics & Gynaecology	10 hours
13	Paediatrics	15 hours
14	Ophthalmology	5 hours
15	E.N.T	5 hours
16	Radiology	5 hours
	SECOND YEAR	Hours
1	Anatomy	250 hours
2	Physiology	250 hours
3	Biochemistry	200 hours
4	Islamic & Pakistan Studies	25 hours
5	Behavioral Sciences	25 hours
6	General Skills	15 hours
7	IT Skills	15 hours
8	Research Skills	15 hours
9	Pathology	90 hours
10	Community Medicine	25 hours
11	Medicine including Psychiatry & Dermatology	70 hours
12	Surgery including, Orthopaedics, Anaesthesia & Dentistry	70 hours

13	Obstetrics & Gynaecology	30 hours
14	Paediatrics	40 hours
15	Ophthalmology	10 hours
16	E.N.T.	10 hours
17	Radiology	10 hours
18	Nuclear Medicine	10 hours
THIRD YEAR MBBS		Hours
1	Pharmacology	300 hours
2	Pathology	240 hours
3	Forensic Medicine	100 hours
4	Community Medicine	75 hours
5	Behavioral Sciences	20 hours
6	General Skills	15 hours
7	IT Skills	15 hours
8	Research Skills	15 hours
9	Medicine, Dermatology and Psychiatry.	143 hours
10	Surgery including, Orthopaedics, Anaesthesia & Dentistry	142 hours
11	Obstetrics & Gynaecology	80 hours
12	Paediatrics	75 hours
13	Ophthalmology	25 hours
14	E.N.T	25 hours
FOURTH YEAR MBBS		Hours
1	Pathology	180 hours
2	Community Medicine	85 hours
3	Medicine including Psychiatry and Dermatology	255 hours
4	Ophthalmology (for students admitted in the session 2008-09)	70 hours
5	ENT (for students admitted in the session 2008-09)	70 hours
6	Surgery including, Orthopaedics, Anaesthesia & Dentistry	275 hours
7	Obstetrics & Gynaecology	140 hours
8	Paediatrics	80 hours
9	Radiology	20 hours
10	Nuclear Medicine	10 hours
11	General Practice	10 hours

12	Clinico-Pathological Conference	60 hours
	FINAL YEAR MBBS	Hours
1	Medicine including Psychiatry & Dermatology	385 hours
2	Surgery including, Orthopaedics, Anaesthesia & Dentistry	385 hours
3	Obstetrics & Gynaecology	140 hours
4	Paediatrics	90 hours
5	Radiology	25 hours

Note: There will be at least five lectures in each professional MBBS on Behavioral Sciences & Research and Development.

B — COURSE OF STUDIES FOR BDS STUDENTS

	<p>The course of studies for Bachelor of Dental Surgery (BDS) is four academic years. At the end of the training a dental graduate should be able to:</p> <ul style="list-style-type: none"> • Make an accurate oral and dental diagnosis. • Give local anaesthetic. • Perform an operation on the teeth and jaws. • Take a good required X-ray. • Perform dental laboratory techniques. • Deal with medico legal cases. • Look after the dental health of the community. 		
	FIRST PROFESSIONAL	Lecture Hours	Hours
1	Anatomy, Histology.	100	300
2	Physiology	50	200
3	Biochemistry	50	120
4	Science of Dental Materials	75	250
5	Information Technology	---	30
	SECOND PROFESSIONAL	Lecture Hours	Hours
1	Oral Biology & Tooth Morphology	60	100
2	General Pharmacology	50	200
3	General Pathology	50	200
4	Community and Preventive Dentistry	40	200
5	Junior Operative/Dental Material Medica	25	110
6	Junior Prosthodontics	25	110
7	Information Technology	---	30
8	Pakistan Studies/ Islamic Studies/ Behavioral Sciences	25	---
	THIRD PROFESSIONAL	Lecture Hours	Hours
1	General Surgery	50	150
2	General Medicine	50	150
3	Oral Medicine and Diagnosis	50	75

4	Oral Pathology	50	100
5	Periodontology	50	125
6	Prosthodontics	30	120
7	Operative Dentistry	20	80
8	Oral and Maxillofacial Surgery	30	120
	FINAL PROFESSIONAL	Lecture Hours	Hours
1	Prosthodontics		250
	a) Complete Dentures	40	
	b) Fixed Prosthodontics	20	
	c) Occlusion.	05	
	d) Maxillofacial Prosthodontics	05	
	e) Gerodontology	05	
2	Operative Dentistry		250
	a) Operative	20	
	b) Endodontic	10	
	c) Paedodontics	10	
	d) Crowns	10	
	e) Radiology	05	
3	Orthodontia and Radiology		250
	a) Orthodontia	40	
	b) Radiology (Cephalometry)	05	
4	Oral and Maxillofacial Surgery		250
	a) Oral Surgery	60	
	b) Anesthesia	10	
	c) Forensic Dentistry	05	

C — EXAMINATIONS

	Internal evaluation in 1 st , 2 nd , 3 rd , 4 th & final professional MBBS and 1 st , 2 nd , 3 rd and Final professional of BDS courses is done as per PM&DC and KMU Academic Council Rules & Regulations. Comprehensive annual University examinations are held in all subjects in all the professional examinations.
	MBBS
	FIRST PROFESSIONAL
1	Anatomy
2	Physiology

3	Biochemistry
SECOND PROFESSIONAL	
1	Anatomy
2	Physiology
3	Biochemistry
4	Islamic Studies and Pakistan Studies.
THIRD PROFESSIONAL	
1	Pharmacology
2	Forensic Medicine
3	General Pathology
FOURTH PROFESSIONAL	
1	Special Pathology
2	Community Medicine
3	Ophthalmology
4	ENT
FINAL PROFESSIONAL	
1	Medicine
2	Surgery
3	Gynae/Obs
4	Paediatrics
BDS	
FIRST PROFESSIONAL	
1	Human Anatomy & Histology
2	Physiology
3	Biochemistry
4	Chemistry of Dental Materials & Laboratory Technique
SECOND PROFESSIONAL	
1	General Pathology & Microbiology
2	Pharmacology including Dental Pharmacology
3	Oral Anatomy, Histology, Physiology
4	Community Dentistry
5	Islamic Studies and Pakistan Studies.

	THIRD PROFESSIONAL
1	General Medicine
2	General Surgery
3	Oral Pathology & Bacteriology
4	Periodontology
5	Oral Medicine
	FINAL PROFESSIONAL
1	Dental Prosthetics including Crown & Bridge work & Laboratory Procedures.
2	Operative Dentistry including Endodontics
3	Paediatric Dentistry.
4	Oral Surgery Anaesthesia, Dental Forensic Medicine, Toxicology and Medical Ethics.
5	Orthodontics& Radiology.

ELIGIBILITY AND RULES FOR EXAMINATION

1. A student shall be eligible to appear in a professional examination if he/she fulfill the following conditions:
 - a. Has passed all the subjects of the previous examination.
 - b. Has undergone the specified period of theoretical and practical courses and clinical training including demonstrations for the said examination to the satisfaction of the department concerned,
 - c. No student is eligible for university examination without having attended at least 75% of lectures, demonstrations, tutorials and practical/clinical work in both *in-patients* and *out-patients* in that academic session.
 - d. Has his / her name submitted to the Controller of Examination KMU by the Principal on clearance by the Head of Department / teacher concerned,
 - e. Has paid the requisite fees for the examination to the KMU and has cleared all the college / hostel dues.
2. Under no circumstances a candidate shall be promoted or allowed to attend classes in the second year MBBS till he/she has previously passed all the subjects in the First Professional Examination.
3. Any student, who fails to clear the 1st Professional MBBS or 2nd Professional MBBS examination in four chances availed or un-availed after becoming eligible for the examination, shall cease to become eligible for further medical education in Pakistan.
4. Maximum of four chances availed or un-availed will be allowed to a student to clear First Professional BDS Examination. If a student fails to pass First Professional BDS in stipulated four chances, his / her name will be struck off from the college. He/she will be considered ineligible to undertake BDS studies anywhere in the country.
5. The Dean/Principal will not forward the examination form of any student unless he /she produces clearance certificate from the college cashier, hostel warden and the college librarian.
6. A student who fails in part of the 1st Professional and 2nd Professional examination and does not avail two consecutive chances will have to clear all the subjects in the subsequent chance. However, there is no bar on the number of chances in third, fourth and final professional examinations MBBS.
7. Each theory and Practical / Oral examination shall be of at least three hours duration.
8. The minimum passing marks in each subject shall be 50% each in theory and practical. A student, who fails in theory or practical examination of a subject, shall be considered to have failed in the subject and will have to reappear both in theory and practical.
9. A student who in any year, fails to pass a subject / subjects in annual as well as in supplementary examinations, shall not be eligible for admission in next higher class, until he/ she passes the failed subject as per procedure. The same shall neither be allowed to attend the next higher classes, nor will his/her attendance be marked in any way. Any attendance of such students marked in subsequent class, without promotion would be of no legal effect.
10. A student, who fails in any subject, shall be required to attend the lectures and practical courses regularly with the subsequent class.
11. A student who re-appears in any professional examination shall pay requisite fee for the examination.
12. A student, who is eligible to appear in the examination but did not take examination for whatever reason, shall be considered to have failed. Any attempt not availed shall be duly counted.
13. Only two examinations, one Annual and one Supplementary of the same professional exam / of the same session / class are allowed in any one academic year. No third or extra supplementary examination is permitted.
14. A student who has passed his / her MBBS / BDS examination shall be entitled to the degree of Bachelor of Medicine and Bachelor of Surgery (MBBS) and Bachelor of Dental Surgery (BDS) from the Khyber Medical University provided that he / she has conformed to the requirements of Pakistan Medical & Dental Council in vogue which may be changed from time to time.
15. Preparatory holidays shall be one month for 1st Professional, 2nd, 3rd and 4th Professional MBBS and for 1st, 2nd and 3rd Professional BDS examinations and not more than two months in Final Professional MBBS / BDS examination. The gap between two consecutive papers should not be more than two days.
17. A student who has cleared first and second professional examination and discontinued his / her studies for a period of 5 years or more will not be allowed readmission. If he/she wants readmission before that period he/she will be allowed to continue his/her studies from the class he/she left. However, the validity of an examination will be 3 years. After 3 years the student has to retake the last professional examination.

FORMAT OF EXAMINATION MBBS EXAMINATIONS

Theory paper will consist of:

a. MCQs

50%

b. Short Essay Questions

50%

FIRST PROFESSIONAL MBBS		
a)	Anatomy and Histology	
	Theory Paper	90 marks
	Internal Evaluation	10 marks
	Oral & Practical	90 marks
	Internal Evaluation	10 marks
	Total	200 marks
b)	Physiology	
	Theory Paper	90 marks
	Internal Evaluation	10 marks
	Oral & Practical	90 marks
	Internal Evaluation	10 marks
	Total	200 marks
c)	Biochemistry	
	Theory Paper	90 marks
	Internal Evaluation	10 marks
	Oral & Practical	90 marks
	Internal Evaluation	10 marks
	Total	200 marks
Any student who fails to clear the First Professional MBBS Part - I examination in four chances availed or un- availed shall cease to become eligible for further medical education in Pakistan. All subjects must be cleared.		
SECOND PROFESSIONAL MBBS		
a)	Anatomy and Histology	
	Theory Paper	90 marks
	Internal Evaluation	10 marks
	Oral & Practical	90 marks
	Internal Evaluation	10 marks
	Total	200 marks

b)	Physiology	
	Theory Paper	90 marks
	Internal Evaluation	10 marks
	Oral & Practical	90 marks
	Internal Evaluation	10 marks
	Total	200 marks
c)	Biochemistry	
	Theory Paper	90 marks
	Internal Evaluation	10 marks
	Oral & Practical	90 marks
	Internal Evaluation	10 marks
	Total	200 marks
d)	Islamic Studies and Pakistan Studies.	100 marks
	Any student who fails to clear the First Professional MBBS Part - II examination in four chances availed or un- availed shall cease to become eligible for further medical education in Pakistan. All subjects must be cleared.	
	THIRD PROFESSIONAL MBBS	
	Pharmacology & Therapeutics	
a.	Theory Paper	135 marks
	Internal Evaluation	15 marks
	Oral & Practical	100 marks
	Animal experiment	35 marks
	Internal Evaluation	15 marks
	Total	300 marks
b.	Pathology General & Microbiology	
	Theory Paper	135 marks
	Internal Evaluation	15 marks
	Oral & Practical	135 marks
	Internal Evaluation	15 marks
	Total	300 marks
c.	Forensic Medicine	
	Theory Paper	90 marks
	Internal Evaluation	10 marks
	Viva voce	90 marks
	Internal Evaluation	10 marks
	Total	200 marks
a.	FOURTH PROFESSIONAL MBBS	
	Community Medicine	
	Theory Paper	135 marks
	Internal Evaluation	15 marks
	Oral & Practical	110 marks
	Internal Evaluation	15 marks
	Project	25 marks
	Total	300 marks
b.	Special Pathology	
	Theory Paper	135 marks
	Internal Evaluation	15 marks
	Oral & Practical	135 marks
	Internal Evaluation	15 marks
	Total	300 marks

c)	Otorhinolaryngology (Ear, Nose & Throat)	
	Theory Paper	90 marks
	Internal Evaluation	10 marks
	Oral & Practical	90 marks
	Internal Evaluation	10 marks
	Total	200 marks
d)	Ophthalmology	
	Theory Paper	90 marks
	Internal Evaluation	10 marks
	Oral & Practical	90 marks
	Internal Evaluation	10 marks
	Total	200 marks
FINAL PROFESSIONAL MBBS EXAMINATION		
a)	Medicine including Psychiatry & Dermatology	
	Theory Papers	
	Paper I	135 marks
	Internal Evaluation	15 marks
	Paper II	135 marks
	Internal Evaluation	15 marks
	Total	300 marks
	Clinical/Practical Examination	
	Clinical/TOACS/OSCE	270 marks
	Internal Evaluation	30 marks
	Total	300 marks
b)	Surgery including Orthopedics & Anesthesia	
	Theory Papers	
	Paper I	135 marks
	Internal Evaluation	15 marks
	Paper II	135 marks
	Internal Evaluation	15 marks
	Total	300 marks
	Clinical/Practical Examination	
	Clinical/TOACS/OSCE	270 marks
	Internal Evaluation	30 marks
	Total	300 marks

c.	Obstetrics & Gynecology	
	Theory Papers	
	Paper I	90 marks
	Internal Evaluation	10 marks
	Paper II	90 marks
	Internal Evaluation	10 marks
	Oral & Practical	180 marks
	Internal Evaluation	20 marks
	Total	400 marks
d.	Paediatrics	
	Theory Paper	90 marks
	Internal Evaluation	10 marks
	Oral and Practical	90 marks
	Internal Evaluation	10 marks
	Total	200 marks

BDS EXAMINATIONS

FIRST PROFESSIONAL BDS EXAMINATION			
	Subject	Theory	Practical
1	Human Anatomy	100	100
2	Physiology	100	100
3	Biochemistry	50	50
4	Chemistry of Dental Materials & Laboratory Technique	100	100
Ten marks are reserved for practical work done during first year for which certified accurate records must be kept, 25 marks will be for laboratory examination like mixing of cement, plaster of Paris, making clasps, 40 marks will be for Oral examination.			
SECOND PROFESSIONAL BDS EXAMINATION			
1	General Pathology & Microbiology	100	100
2	Pharmacology including Dental Pharmacology	100	100
3	Oral Anatomy, Histology, Physiology	100	100
4	Community Dentistry	50	50
5	Islamic Studies and Pakistan Studies.	100	----
THIRD PROFESSIONAL BDS EXAMINATION			
1	Medicine	100	100
2	Surgery	100	100

3	Oral Pathology & Bacteriology	100	100
4	Periodontics	50	50
5	Oral Medicine	50	50
A candidate will also be examined in Oral Prophylaxis carrying 25 marks. This examination will be conducted along with the subject of Oral Medicine/Oral Pathology.			
FINAL PROFESSIONAL BDS EXAMINATION			
1	Prosthodontics.	100	200
2	Oral and Maxillofacial Surgery	100	200
3	Orthodontics	100	200
4	Operative Dentistry	60	140
5	Pediatric Dentistry	50	50
In the subject of Conservative Dentistry 40% marks will be reserved for Periodontia, Community Dentistry and Children Dentistry.			

FEE AND OTHER SUBSCRIPTIONS

FEES & SUBSCRIPTION FOR MBBS STUDENTS

The following Fee/Dues will be charged from each student irrespective of his/her year of admission. Students admitted against self-finance seats will pay tuition fee as given in the admission policy 2018-2019. However, the Dean/Principal of the college may make adjustments in the student's funds according to the facilities available in the college. In case of shifting of students in 1st year MBBS/BDS in medical/dental colleges, all dues will be refunded to the students being shifted. In case admission of a student in 1st Year MBBS/BDS is cancelled on his/her own request **before the closing date of admission**; he/she should be refunded **all dues except admission fee**. If the student wishes to leave the institution and does not join classes then there shall be a 100% refund of all deposit fees except for the one time admission fee. If the student wishes to leave the institution within one month there shall be 50% refund of all deposited fee and if the student wishes to leave the institution after one month of joining classes then there shall be a 25% refund.

FEE AND OTHER SUBSCRIPTIONS

FIRST YEAR MBBS		
	Government Dues	
1.	Admission Fee	3300/-
2.	Tuition Fee	7700/-
3.	Dissection Fee	110/-
4.	Physiology/Biochemistry Experiment Fee	110/-
5.	Microscope Fee	55/-
	Students Fund	
6.	Caution Money (Refundable)	550/-
7.	Academic Fee	300/-
8.	College Identity Card Fee	100/-
9.	Library Membership Fee	330/-
10.	PMDC Registration Fee	5000/-
11.	University Registration Fee	1800/-
12.	Transport Charges	1500/-
13.	Anatomy Fund	100/-
14.	Sports Fee	300/-
15.	College Magazine	1000/-
16.	Student's Benevolent Fund	500/-
17.	Correspondence Fee/	500/-
18.	Document Verification Fee	300/-
19.	Literary Society Fund	200/-
20.	Litigation Fee	1000/-
21.	Fee for Internal Assessment	200/-
22.	KMU Annual Affiliation Retention Fee	5000/-
	Total	Rs. 29955/-

Note: 1. All selected candidates in First year MBBS/BDS in Public sector Medical/Dental Colleges shall deposit the litigation fee in Khyber Medical College, Peshawar at the time of interviews within specified period.

FEE AND OTHER SUBSCRIPTIONS

FEES & SUBSCRIPTION FOR MBBS STUDENTS

The following Fee/Dues will be charged from each student irrespective of his/her year of admission. Students admitted against self-finance seats will pay tuition fee as given in the admission policy 2018-2019. However, the Dean/Principal of the college may make adjustments in the student's funds according to the facilities available in the college. In case of shifting of students in 1st year MBBS/BDS in medical/dental colleges, all dues will be refunded to the students being shifted. In case admission of a student in 1st Year MBBS/BDS is cancelled on his /her own request **before the closing date of admission**; he/she should be refunded all dues except admission fee. If the student wishes to leave the institution and does not join classes then there shall be a 100% refund of all deposit fees except for the one time admission fee. If the student wishes to leave the institution within one month there shall be 50% refund of all deposited fee and if the student wishes to leave the institution after one month of joining classes then there shall be a 25% refund.

FEE AND OTHER SUBSCRIPTIONS

FIRST YEAR MBBS

	Government Dues	
1.	Admission Fee	3300/-
2.	Tuition Fee	7700/-
3.	Dissection Fee	110/-
4.	Physiology/Biochemistry Experiment Fee	110/-
5.	Microscope Fee	55/-
	Students Fund	
6.	Caution Money (Refundable)	550/-
7.	Academic Fee	300/-
8.	College Identity Card Fee	100/-
9.	Library Membership Fee	330/-
10.	PMDC Registration Fee	5000/-
11.	University Registration Fee	1800/-
12.	Transport Charges	1500/-
13.	Anatomy Fund	100/-
14.	Sports Fee	300/-
15.	College Magazine	1000/-
16.	Student's Benevolent Fund	500/-
17.	Correspondence Fee/	500/-
18.	Document Verification Fee	300/-
19.	Literary Society Fund	200/-
20.	Litigation Fee	1000/-
21.	Fee for Internal Assessment	200/-
22.	KMU Annual Affiliation Retention Fee	5000/-
	Total	Rs. 29955/-

Note: 1. All selected candidates in First year MBBS/BDS in Public sector Medical/Dental Colleges shall deposit the litigation fee in Khyber Medical College, Peshawar at the time of interviews within specified period.

SECOND YEAR MBBS

	Government Dues	
1.	Tuition Fee	8800/-
2.	Dissection Fee	110/-
3.	Physiology/Biochemistry Experiment Fee	110/-
4.	Microscope Fee	60/-
	Students Fund	
5.	Academic Fee	300/-
6.	Library Membership Fee	330/-
7.	Transport Charges	1500/-
8.	Anatomy Fund	100/-
9.	Sports Fee	300/-
10.	College Magazine	1000/-
11.	Student's Benevolent Fund	500/-
12.	Correspondence Fee	300/-
13.	Literary Society Fund	200/-
14.	Litigation Fee	1000/-
15.	Fee for Internal Assessment	200/-
16.	KMU Annual Affiliation Retention Fee	5000/-
	Total	Rs. 19810/-

THIRD YEAR MBBS

	Government Dues	
1.	Tuition Fee	9900/-
2.	Pharmacy / Pharma Academic Fee	253/-
3.	Bacteriology, Haematology & Pathology Fee	253/-
4.	Hospital Fee	253/-
	Students Fund	
5.	Postmortem Fee	200/-
6.	Academic Fee	300/-
7.	Library Membership Fee	330/-
8.	Transport Charges	1500/-
9.	Sports Fee	300/-
10.	College Magazine	1000/-
11.	Student's Benevolent Fund	500/-
12.	Correspondence Fee	300/-
13.	Clinical Card Fee	200/-
14.	Literary Society Fund	200/-
15.	Litigation Fee	300/-

16.	Fee for Internal Assessment	200/-
17.	KMU Annual Affiliation Retention Fee	5000/-
	Total	Rs. 20889/-

FOURTH YEAR MBBS

Government Dues

1.	Tuition Fee	GSF = 400000	11000/-
2.	Community Medicine Fee	Total GSF = 411182	253/-
3.	Pathology Fee	1/Tax 5% = 20559	121/-
4.	Hospital Fee		1078/-
	Students Fund	(431741)	
5.	Academic Fee		300/-
6.	College Identity Card Fee		100/-
7.	Library Membership Fee		330/-
8.	Transport Charges		1500/-
9.	Sports Fee		300/-
10.	College Magazine		1000/-
11.	Student's Benevolent Fund		500/-
12.	Correspondence Fee		300/-
13.	Literary Society Fund		200/-
14.	Fee for Internal Assessment		200/-
15.	KMU Annual Affiliation Retention Fee		5000/-
	Total	Open / FATA / UFC	Rs. 22182/-

FINAL YEAR MBBS

Government Dues

1.	Tuition Fee	13310/-
2.	Hospital Practice Fee	1078/-
	Students Fund	
3.	Academic Fee	300/-
4.	Library Membership Fee	330/-
5.	Transport Charges	1500/-
6.	Sports Fee	300/-
7.	College Magazine	1000/-
8.	Student's Benevolent Fund	500/-
9.	Correspondence Fee	300/-
10.	Literary Society Fund	200/-
11.	Fee for Internal Assessment	200/-
12.	KMU Annual Affiliation Retention Fee	5000/-
	Total	Rs. 24018/-

FOR BDS STUDENTS FIRST PROFESSIONAL BDS

	Government Dues	7700/-
1.	Tuition Fee	3300/-
2.	Admission Fee	290/-
3.	Dental Material Fee	110/-
4.	Dissection Fee	
	Student fund	1100/-
5.	Caution Money (Refundable)	500/-
6.	Correspondence Fee / Documents Verification Fee	330/-
7.	Library Membership Fee	5000/-
8.	P.M.D.C. Registration Fee	1800/-
9.	University Registration Fee	1000/-
10.	Transport Charges	100/-
11.	Anatomy Fund	55/-
12.	Medical Examination Fee	300/-
13.	Sports Fee	1000/-
14.	College Magazine Fee	500/-
15.	Students Benevolent Fund	150/-
16.	Literary Society Fund	100/-
17.	College Identity Card Fee	1000/-
18.	Litigation Fee	55/-
19.	Breakage Fee	200/-
20.	Fee for Internal Assessment	5000/-
21.	KMU Annual Affiliation Retention Fee	
	Total	Rs. 29590/-

Note: 1. All selected candidates in First year MBBS/BDS in Public sector Medical/Dental Colleges shall deposit the litigation fee in Khyber Medical College, Peshawar at the time of interviews within specified period.

SECOND PROFESSIONAL BDS

	Government Dues	
1.	Tuition Fee	8800/-
2.	Pharmacology Practical Fee	253/-
3.	Pathology & Bacteriology Practical Fee	253/-
4.	Dental Material Fee	385/-
5.	Community dentistry Fee	280/-
	Student fund	
6.	Correspondence Fee	400/-
7.	Library Membership Fee	330/-
8.	Transport Charges	1000/-
9.	Anatomy Fund	450/-
10.	Sports Fee	300/-
11.	College Magazine Fee	1000/-
12.	Litigation Fee	1000/-
13.	Students Benevolent Fund	500/-
14.	Literary Society Fund	150/-
15.	Breakage Fee	110/-
16.	Fee for Internal Assessment	200/-
17.	KMU Annual Affiliation Retention Fee	5000/-
	Total	Rs. 20411/-

THIRD PROFESSIONAL BDS

Government Dues		
1.	Tuition Fee	9900/-
2.	Dental Material Fee	308/-
3.	Oral Pathology & Bacteriology Practical Fee	121/-
4.	Dental Hospital Practice Fee	220/-
Student fund		
5.	Correspondence Fee	300/-
6.	Hospital Fee	1078/-
7.	Library Membership Fee	330/-
8.	Transport Charges	1000/-
9.	Sports Fee	300/-
10.	College Magazine Fee	1000/-
11.	Litigation Fee	500/-
12.	Students Benevolent Fund	500/-
13.	Literary Society Fund	150/-
14.	Breakage Fee	110/-
15.	Fee for Internal Assessment	200/-
16.	KMU Annual Affiliation Retention Fee	5000/-
Total		Rs. 21017/-

FINAL PROFESSIONAL BDS

Government Dues		
1.	Tuition Fee	11000/-
2.	Dental Hospital Practice Fee	1078/-
3.	Dental Prosthetic Laboratory Fee	424/-
Student fund		
4.	Correspondence Fee	300/-
5.	Library Membership Fee	330/-
6.	Transport Charges Fee	1000/-
7.	Sports Fee	300/-
8.	College Magazine Fee	1000/-
9.	Litigation Fee	500/-
10.	Students Benevolent Fund	500/-
11.	Literary Society Fund	150/-
12.	Breakage Fee	55/-
13.	Fee for Internal Assessment	200/-
14.	KMU Annual Affiliation Retention Fee	5000/-
Total		Rs. 21837/-

TUITION FEE FOR FOREIGN SELF FINANCE SEATS

- FOR MBBS 6000 US\$ per year
- FOR BDS 6000 US \$ per year
- For repeat year 1000 US \$

COST OF LITIGATION

Litigation allowance @ Rs. 2000 and Rs. 1500 for appearance in the local courts and Rs. 3500 and Rs. 2000/- for appearance in the courts outside district will be provided to the officers and assistants respectively. In addition, the above mentioned officials will be allowed to travel by the college vehicle for the purpose.

RULES REGARDING PAYMENT OF FEES / FINE FOR MBBS / BDS STUDENTS

1. All students must pay their fees/dues by the date(s) fixed by the Dean/Principal of the concerned college. If any student is unable to pay the dues on the due date, he/she must seek the permission of the Dean/Principal for extension of the last date of payment of the dues. If the fee is not paid one month after the due date, the defaulters in category A will be fined rupees 30/- per day, and those in category B & C will be fined Rs. 120 per day.
* Fines once levied will not be condoned.
2. If the defaulter fails to clear the dues 60 days after the last due date, the candidate's name will be struck off from the college roll.
The candidate may appeal to the college authorities for readmission in the same session. The college authorities may allow readmission on compassionate grounds only after payment of Rs. 10,000/- for category A students and Rs. 50,000/- for category B students. This will be in addition to the college normal fees and other subscriptions.
* Fines once levied will not be condoned.
3. The student who is detained or has failed to pass the examination in both Annual/Supplementary shall have to pay prescribed fees and other subscriptions in full for the class in which he/ she has failed except final year MBBS/ BDS.
4. All those students who have passed/failed in supplementary examination must seek their admission/re-admission forthwith just after the declaration of the result of their classes. All those Students who failed to comply with the above rule (3) will not be allowed to attend the classes Or appear in the examination.
5. Fees once paid shall not be refunded including those of migration cases, but in the case of student who is prevented by the illness or other reasons beyond his/her control from attending the college for most of the year for which he/she may be exempted from payment of the whole or part of amount of fee for the year in which such a student re-joins the college. The levy, accounting and disposal of caution money will be at the disposal of the Principal.
6. The name of a student, who has not paid/cleared all the dues of the college, will not be entered in the admission register, nor will he/she be allowed to attend the classes or appear in the examination.
7. If the security deposited is not claimed within a period of 6 months of the date of leaving the college, then it shall not be refundable and will be credited to the benevolent fund maintained by the college for its students.
8. B.D.S. students in each class will purchase their own minor instruments required for their practical/ clinical work. Large equipment's like dental chairs, units and other lab machines and materials will be provided by the college.
9. Those students who use the college vehicle for pick and drop, monthly fees will be charged in accordance with the distance from the college. The amount of fee will be decided by the Academic Council from time to time.

SCHOLARSHIPS AND AWARDS FOR MBBS STUDENTS

SCHOLARSHIPS:

- i. MERIT, PATA and FATA SCHOLARSHIP HOLDERS of this Institution are also allowed to avail the opportunity of any other scholarship from non-government source if they deserve. However no student is allowed to take privilege of more than one scholarship at a time from the Government.
- ii. Students who are getting scholarship will not be entitled to receive the scholarship if he/ she continuously remains absent from the college without first obtaining leave of absence from the Dean/Principal or fails in the professional exams.
- iii. In case of breach of any discipline, the scholarship will be withheld.

GOLD MEDALS FOR MBBS STUDENTS

- i. One Gold medal is awarded to the Best Graduate of the Year. Best graduate of the year is one who stands first in the aggregate of all the professional MBBS examinations marks, in his/her first attempt.
- ii. One Gold Medal is awarded for standing first in each professional MBBS examination in first attempt.
- iii. One Gold Medal is awarded for standing first in each subject in all Professional Examinations in first attempt.
- iv. One Gold Medal is awarded by the University for Top Position holder of all Medical Colleges of Khyber Pakhtunkhwa.

GOLD MEDALS FOR BDS STUDENTS:

- i. One Gold Medal is awarded to the Best Dental Graduate of the Year. Best Graduate of the Year is one who stands first in the aggregate of all the professional B.D.S. examinations of the University without having any supplementary in any Professional BDS Examination.
- ii. One Gold Medal is awarded for standing first in each professional BDS examination in first attempt.
- iii. One Gold Medal is awarded for standing first in each subject in all Professional Examinations in first attempt.
- iv. One Gold Medal is awarded by the University for best graduate of all dental colleges of Khyber Pakhtunkhwa.

EXTRA CURRICULAR ACTIVITIES

The students are encouraged to take active part in the extracurricular activities to ensure "Healthy Body, Healthy Mind". The following societies of the students are allowed in the Medical/Dental Colleges.

1. Literary society
2. Sport society
3. Social Welfare Society
4. Hiking Club

RULES AND REGULATIONS FOR STUDENTS AT COLLEGE

1. Every student shall be required to attend at least 75 per cent of the Lectures/seminars/tutorials/practical and clinical classes of each subject in each class failing which his/her name shall not be forwarded to the Controller of Examination, of the University for the purpose of appearing in the concerned examination. It applies also to students who are re-admitted after failing in Annual and Supplementary examinations.
2. Repeated absence from lectures, practical, classes, seminars, demonstrations and from hospital wards for four weeks without justification will make a student liable to be expelled from the college.
3. Clinical students (third, fourth and final year) shall be required to do hospital work during the vacation if necessary.
4. The margin of twenty-five per cent of absence in theoretical/lectures, practical classes and demonstrations and in hospital practice is intended to cover absence only on account of sickness or special emergency considered justifiable by the Dean/Principal. A written application should be sent to the Dean/Principal by the student or his/her parent or guardian, reporting his/her illness or cause of absence.
5. Every student is required to attend punctually at the hours notified for lectures, demonstrations, seminars, tutorial classes, practical and hospital wards.
6. No student is allowed to leave the lecture room, practical class or a hospital ward without the permission of his/her teacher or until the teaching session ends.
7. All irregularities, negligence of duties and breach of discipline and the subsequent action taken are to be brought to the notice of the Dean/Principal by the teacher under whom the student is attending teaching/learning sessions.
8. The students must wear the prescribed uniform of the college, and white coat while attending laboratories/dissection hall and the hospital.
Female Students: shirt, white Shalwar, white Dupatta, Black Shoes white long overall up to knee length, Maroon colour Jersey/Coat, White Abaya (optional) and or maroon scarf (Optional).
Male Students: White Shirt, Shalwar (White in color) / Trouser (Grey/Black in color), Black shoes white long overall up to knee length, White Turban (Paghri)/Cap (Optional), Maroon colour Jersey/pullover/Coat.
9. All the students should display their Identity Cards on their chest pocket of overall.
10. Students are required to observe discipline and shall not make gatherings, noise or play in un-authorized places at all times in the college and hospital premises. Students are forbidden to sign whistle, create noise, make gatherings or indulge in any indecent behaviour or activity in the college and hospital premises during or after the working hours.
11. No unauthorized game is to be played in the college, hostel or hospital premises at any time.
12. Outsiders are not allowed in the college.
13. Any student breaking or damaging any college or hospital property shall be required to pay the cost of repair or replacement. In case of willful damage he/she shall be punished as Dean/Principal may deem fit.
14. Students are forbidden to address any member or person in authority directly. Any communication intended for such higher authority must be submitted through the Dean/Principal who will forward it if he considers it desirable.
15. Any student desirous of addressing the Dean/Principal by letter must do so separately. Joint applications are entirely prohibited and will not receive attention.
16. Any student wishes to see the Dean/Principal may do so with prior appointment. Students are not allowed to see the Dean/Principal or any other authority in groups.
17. Parents/Guardians are expected to co-operate with the authorities of the college by prevailing upon their wards not to take any part in activities against the rules and discipline of the institution.
18. All teachers are accessible at any time for the adressal of student difficulties and will be pleased to hear them and to give them advice, but students must approach their teachers and non-teaching staff politely.
19. If a student of the college takes part in any political activities, un-authorized acts or conducts himself/herself in an unbecoming manner or in such manner as would interfere with the corporate life or educational work of the college, the Dean/Principal may take any action he deems proper or refer him/her to the College Correction and Reform Committee.
20. It is desirable for medical students to engage themselves to reasonable extent in wholesome extracurricular activities such as sports and literary pursuits during leisure time only.
21. No person shall be invited to address a meeting, society in the college premises without prior permission of the Dean/Principal. In all cases, the chair shall be occupied by a responsible person approved for the purpose by the Dean/Principal. The subject of debate shall be fixed after obtaining the approval of the Dean/Principal in advance. No objectionable political or controversial content is permissible.
22. No student shall address a Press Conference, nor write to the press on the political or related subject or matters concerned directly with the administration of the College, University or any Government or Educational Institution in Pakistan or abroad. No poster or banners shall be put up without the approval of the Dean/Principal.
23. No student in the college shall be permitted to have any connection with a private dispensary or a consulting room to pose or work as a medical practitioner.
24. No society may be set up by the students nor any meeting held in the college premises without the written permission of the Dean/Principal.
25. In case of complaint it will be investigated first by the Chairperson/Head of Department concerned. If it is of serious nature it will be forwarded to the Correction and Reform Committee for further investigation and their recommendation will be forwarded to the Dean/Principal.
26. In dealing with any breach of discipline, infringement of the rules and regulations mentioned in this prospectus, the Dean/Principal may decide to order appropriate penalty including apology, verbal and/or written, withdrawal of scholarship, temporary suspension from the college, removal from the hostel, compulsory migration, expulsion from the college and rustication. If rustication from the college is required, the case will be placed before the College Academic Council whose decision will be final.....
27. In all case, leave taken will be at students own risk so far as percentage of attendance is concerned. Even a medical certificate will not condone a deficiency in attendance. Sick leave even sanctioned on medical certificate leading to absence in an examination will mean failure in that examination.

28. The name of the student who is absent without leave continuously for a period of four weeks will be struck off from the college roll.
29. Students absenting themselves from college or hospital work without any application shall be liable to a fine imposed by the Dean/Principal.
30. Continuous absence by a scholarship holder will be reported to the sanctioning department for the cancellation of scholarship.
31. Every student must realize that the duty of the authorities of the Medical/Dental College is to impart medical education to him/her and conduct College and University examination according to statutes as laid down in university ordinances for the various MBBS examination and according to the regulations of the Pakistan Medical & Dental Council and also to maintain discipline and to run the administration of the college. Every student must, therefore, accept unconditionally the ordinance of the University, recommendations of Pakistan Medical & Dental Council and provisions made in this prospectus including any amendment to be made thereafter. All these have been evolved for the purpose of imparting a sound medical/dental education to the students.
32. Students are not permitted to remain in the lecture room except at the prescribed hours of lectures
33. Students are strictly prohibited to keep fire arms and other weapons in the hostel, college premises or on their person. The possession/use of narcotics is also strictly prohibited. Anyone found in possession of or using narcotics or fire arms will be expelled from the hostel immediately. In case of suspicion, any room can be searched without prior notice.
34. All kind of tours should be arranged in vacations /holidays.

THE TUTORIAL SYSTEM

The object of the tutorial group system is to keep the staff and students in touch with one another and to promote mutual well being and understanding. Each tutor is to look personally into all the difficulties of students (individually) and to report to the Dean/Principal of the college for opinion and advice, if any.

- i. The college students are divided into tutorial groups, every group being made up of a proportion of students from each class.
 - ii. The group tutors will comprise of teachers of the college.
 - iii. Students once placed in a group will remain in that group until he/she leaves the college. Under no circumstances transfer of a student from one group to another will be permitted.
 - iv. The tutor -in-charge of the group will meet the respective group students as occasion arises.
35. Students have to be present in time at any specified activity of the college.
 36. For leave or absence the student must apply in writing, stating the reason for his/her request. Requests are submitted to the Dean/Principal.
 37. All sick students should report to the teaching hospital of the concerned college before attending any other clinic. The Doctor's advice etc. has to be submitted to the college office.
 38. At the beginning of the College year the students elect a representative who is supposed to speak on behalf of the class, in all matters concerning the student's community. The representative can be asked to represent his/her class to teachers and committee meetings.
 39. Students are not allowed to bring person not belonging to the staff or the students into the training and education departments without previous permission of the Dean/Principal.
 40. Students have to wear white coats during practical and clinical work.
 41. All students are responsible for the good care and maintenance of machinery and equipment used during training. They will have to pay for the loss or damage. Breakage and losses are to be reported immediately to the teacher.
 42. Students should keep the class room/Laboratory/ward clean.
 43. Security measures for handling acid etc are to be strictly followed.
 44. All accidents, including minor ones have to be reported to the teacher immediately.
 45. Absentees would be sent to the principal who may impose fine and take appropriate action.
 46. Late comers may be marked absent.
 47. Illness leave more than one day would be allowed subject to medical examination and recommendations.
 48. The Authority may expel a student at any time if it is not satisfied with his/her health, conduct or character.

1. TIMING

- a) All students must be in the college by 8:00 AM on all working weekdays (Monday-Saturday).
- b) Must not be late from the lecture without a valid reason and must attend all teaching and training activity punctually according to the time table.
- c) Students are not allowed to leave the College without a valid reason.

2. VISITORS

Visitors will not be allowed to see students during classes/ practical/ wards etc.

3. CLEANLINESS

Students are responsible for the cleanliness of their own dormitories, classrooms and laboratories.

4. C LOTHING

- a) All students must wear the authorized uniform during Practical and hospital duty, and on such other official occasions as the administration may designate.
- b) All students must be decently, neatly and cleanly dressed at all times.
- c) Students are not permitted to make any alteration in their uniforms.

5.1 INTOXICATING DRINKS AND DRUG ABUSE

No student is allowed to be in possession of any drugs without a valid reason Possession of intoxicating substances of such as alcohol, opium products and other substances of intoxication and poisons is strictly prohibited.

6. NOISE

Unnecessary noise is not allowed in the college / hospital premises.

7. SMOKING

Students are not allowed to smoke within the College and Hospital premises.

8. USE OF ABUSIVE LANGUAGE

No student is allowed to use abusive language at any time.

9. RIOT

No riots, strikes, boycott and demonstrations are allowed.

10. WEAPONS

Possession of arms, explosives and other weapons are strictly prohibited.

11. FIGHTING AND ASSAULT

No fighting and assaults shall be tolerated.

HOSTEL RULES AND REGULATIONS

SHORT TITLE AND COMMENCEMENT:

- i) These regulations shall be called "Medical Colleges Hostel Admission, Residence and Financial Rules".
- ii) These shall come into force at once.

DEFINITION

In these regulations, unless the context otherwise requires, the following expressions shall have the meanings assigned to them. These are:-

- a) Hostel means Boys Hostel and Girls Hostel.
- b) Hostel Administration means Chief Provost, Provosts, Assistant provost, Wardens & House keeper of Girls hostel.
- c) Dean/Principal means The Dean/Principal of the Medical College.
- d) Assistant Provost means staff appointed by the Government of Khyber Pakhtunkhwa Peshawar.
- e) Warden means any officer or member of the teaching/non teaching staff, appointed by the Dean/Principal.
- f) Boarder means a regular student of the college, allowed under these rules to reside in the hostel.
- g) Employees of the hostel means Hostel Superintendent, Clerks, Bearers, Cooks, Sweepers and other persons assigned the duties in the hostels.
- h) 'Hostel Authority' means Authority of the College.
- i) 'Hostel regulations' means regulation enumerated herein after.

STAFF AND THEIR DUTIES

CHIEF PROVOST

- a) The Chief Provost will be a Professor of medical college, appointed by the Dean/Principal of the concerned college.
- b) The Chief Provost will be the overall in-charge of the hostels.
- c) The Chief Provost shall keep the Dean/Principal of the concerned college informed about all matters of importance about the hostels.
- d) The Chief Provost shall be granted an allowance of Rs. 8000/month.

PROVOST

- a) Each hostel shall have one provost who is a senior member of teaching staff appointed by the Dean/Principal of the college on the recommendation of the Chief Provost of the concerned college.
- b) He will be responsible for the overall supervision of the concerned hostel.
- c) To Chair the meeting of Assistant Provost/Warden and Superintendent/House Keeper of the hostel on the request of Assistant Provost/ Warden of a hostel in case of emergency of any unforeseen happening.
- d) The Provost shall be granted an allowance of Rs. 5000/month.

ASSISTANT PROVOST

He/she is an officer appointed by Government of Khyber Pakhtunkhwa/IMC/Dean/Principal, whose duties include:

- a) Overall supervision of the hostels.
- b) To co-ordinate the activities of all the hostels.
- c) To convene meeting of the Wardens from time to time to discuss matters/problems of students, hostels and to sort out their solutions and to implement all the decisions taken by the authority.
- d) To call a meeting on the request of Warden of the hostel in case of emergencies or any unforeseen happenings.
- e) To intimate to the Chief Provost, all information in respect of matters of importance and shall obtain the sanction for actions proposed and shall consult him on all matters of importance of the hostels.
- f) To indicate quantum of repair/maintenance work with the help of maintenance staff and to intimate cost on annual repair within the hostel, to the Principal for inclusion in the annual maintenance and repair estimates.
- g) To check and approve all kinds of hostel bills.
- h) To authorize expenses to the Warden up to Rs. 5000/- In case of excess he will get the approval of the Principal.
- i) Supervise Hostel Establishment.
- j) To keep a check on receipts/expenses.
- k) The Assistant Provost who has been assigned this as an additional duty shall be granted an allowance of Rs. 3000/month.

WARDEN

- a) The warden shall be directly under the control of the hostel administration that will look after the hostel affairs.
- b) The warden, in all matters requiring approval, attention or advice of the College administration, relating to discipline or change of conditions in the hostel or any deficiency shall inform/report to the Assistant Provost Office.
- c) The warden shall make the admission of the students on the prescribed form and will maintain complete record of the students and to issue hostel leaving certificate to a resident student after clearance.
- d) The warden, in consultation with the hostel superintendent/house keeper shall make a Food Committee consisting of 5 resident students from different classes, one of them will perform the duties of Senior Food Monitor.
- e) The warden shall constitute a Sports Committee for the hostel comprising of 5 students, one of them will work as the Sports Secretary.
- f) The Warden in consultation with the Assistant Provost will report all cases of indiscipline or breach of regulations and orders relating to hostel affairs to the Chief Provost.
- g) The Warden shall supervise the activities of washer-man, tuck shop and mess contractors and ensure payment of dues by them to the account branch before 10th of each month.
- h) The Warden will not stay out of hostel during night without prior permission of Assistant Provost or Dean/Principal, as the case may be.
- i) The Warden will be responsible for the safety of hostel property for which he/she shall maintain complete record and also maintain accounts record which will be checked annually by the Accounts Officer and by the Physical Verification Committee of the College. He/ She will be held personally responsible for any damage or loss sustained to the hostel Property.
- j) In case of leave from the hostel he shall inform the Assistant Provost and the Chief Provost.
- k) Part-time the warden shall be provided rent free accommodation in the hostel and shall be granted an allowance of Rs. 3000/month.

SUPERINTENDENT/HOUSE KEEPER Is responsible:

- a) To implement the hostel's regulations with the help of Warden, Assistant Provost and Provost.
- b) To report to the warden every month about non-payment of various funds like mess dues, room rent, electricity and gas charges etc payable by each boarder from date of his/her admission. He/ She shall also report to the student affairs section about the non-payment of dues.
- c) To physically verify the presence of students in their allotted rooms and to check and report the stay of outsiders in the hostels to the warden.
- d) To maintain and prepare the list of monthly mess dues of each boarder.
- e) To check the attendance of the staff working in the hostel and to keep their leave record in their personal files.
- f) To maintain the stock register of permanent and consumable items such as crockery, furniture and other articles of the hostel.
- g) To check and report the water, electricity and gas problems of hostels and communicate them to the concerned authorities through warden and provost.
- h) To check the cleanliness inside and outside the hostel premises.
- i) To look after the common room and supervise indoor and outdoor games.
- j) To prepare demands as per college rules and to route the demands through hostel administration and main store department of the college.
- k) The House keeper will not stay out of hostel during night without prior permission of Warden, Assistant Provost or Chief Provost as the case may be.

HOSTEL CLERK Is responsible:

- a) To maintain all sorts of account books, stock register etc.
- b) To help the Superintendent/House Keeper of the hostel and perform all sorts of clerical work.
- c) To perform any other duty assigned by the hostel administration.

HOSTEL SECURITY

Hostel Security staff will keep liaison with Security Officer of the concerned college for all matters concerning to Security.

HOSTEL ADMISSION

- a) Accommodation in the hostels is a privilege and cannot be claimed as a right. Accommodation being limited in the hostels may not be provided to all the applicants.
- b) Only those students, who are on the roll of the Medical/Dental College, may be allowed admission in the hostel.
- c) Accommodation in the hostels is to be provided on merit cum seniority basis.
- d) Students having accommodation (personal, or official) within a radius of 20 kilometers of the district where the college is located will not be eligible for hostel accommodation.
- e) Students seeking hostel accommodation are required to apply on the prescribed hostel admission form. Students shall submit duly completed forms along with three passport size photos affixed on the hostel admission form and a copy of the DMC of the last exam passed. The forms after necessary scrutiny will then be forwarded to the office of the Assistant Provost. (In case of submission of incorrect/ false information hostel admission will be cancelled and will be fined Rs. 10,000/-)

- f) The Assistant Provost will prepare a merit list of the applicants after necessary scrutiny of the admission forms. Allotment of hostel rooms will then be done by the hostel admission committee. Handing over/possession may take time depending upon the time required to complete the process of shifting by ex-room holders.
- g) Students will not be allowed to stay in hostel once they appear in the Final Professional MBBS /BDS examination. However, the failed students who will appear in the supplementary examination may formally request for allotment of seat in hostel; the seat may be allotted subject to availability of accommodation and on payment of extra hostel dues and other charges as per rules.
- h) The Provost has the right to refuse admission in the hostel to a student whose past record in the hostel is not satisfactory.
- i) A student who gets admission in the hostel shall occupy his/her room within 7 days. A student who fails to turn up within this period will forfeit his right of admission.
- j) Students of 1st, 2nd, 3rd, 4th and 5th year will be accommodated in seater rooms. Subject to availability, final year students may be accommodated in cubicle rooms.
- k) Students are required to deposit hostel dues in advance at the beginning of each session/, failed students are also required to deposit hostel dues in advance.

HOSTEL CORRECTION AND REFORM COMMITTEE

Hostel Correction and Reform Committee will comprise of:

- a) Chief Provost
- b) Provost
- c) Assistant Provost
- d) Security Officer of the college
- e) Wardens

This committee will be responsible for:

- a) Carrying out enquiry in disciplinary cases in the hostels.
- b) The hostel discipline committee will decide the cases according to hostel conduct and discipline regulations.
- c) The hostel discipline committee may forward the cases needing severe penalties (such as imposition of a fine of more than Rs. 10,000 and or expulsion/ rustication from the college) to the college Correction and Reform Committee.
- d) Any other matter dealing with law and order in the hostels.

HOSTEL REGULATIONS

- a) No student will be allowed to change the room once allotted to him/her except with prior permission of the warden. Students doing mutual shifting without prior permission of the hostel warden or assistant provost will be fined Rs: 5000 each.
- b) No student will be allowed to keep extra furniture of the hostel.
- c) No student will be allowed to change hostel except with permission of the Chief Provost. Students shifting from one hostel to another hostel without prior permission will be fined Rs: 5000.
- d) Resident students may be allowed to leave the hostel but only after payment of all outstanding dues.
- e) Private food arrangement within the rooms is not allowed. No resident will overstay beyond authorized period of academic session. In case of overstay of final year student, he/she will have to pay full proportional hostel charges such as electricity, room rent, gas charges and other hostel charges etc.
- f) Resident students are not allowed to use heaters, air coolers and air conditioners in their rooms. Any violation will lead to imposition of fine, recovery of charges incurred and confiscation of the forbidden item.
- g) Resident students are not allowed to participate in any political activity. Any body found involved in political activity will be fined Rs: 10000 and his/ her hostel admission will be cancelled.
- h) Resident students are not allowed to invite any political figure, scholar or any individual for any speech, lecture or sermon. Failing to comply is liable to disciplinary action.
- i) Entry of females into boys' hostels and vice versa, is strictly prohibited.
- j) Resident students cannot entertain their guests for a night stay without the prior permission of the Warden. The Warden may allow the guests of a Resident to stay for a maximum of two days. However no underage guest is allowed to stay in the hostel. Any violation would make the student liable to disciplinary action/cancellation of hostel admission.
- k) Resident students are not allowed to keep any valuables, arms, intoxicants, drugs, rods or daggers, and harmful materials etc in the hostel. Any violation of this rule will result in serious disciplinary proceedings and may lead to imposition of heavy fines and expulsion from the hostel.
- l) Any student found guilty of subletting the hostel room or keeping an outsider in the room will have to pay an extra fee for the full session and his hostel admission will stand cancelled.
- m) If a room is found locked for more than a month without information to the hostel authorities, the room will be allotted to another needy student.

REGULATIONS FOR HOSTEL CORRECTION AND REFORM COMMITTEE

1	Violation of hostel rules or disobeying the orders of the hostel administration.	First time a fine of up to Rs. 1000/- Second time a fine of up to Rs. 3000/- Third time expulsion from the hostel.
2	Keeping non- residents without prior permission.	First time a fine of up to Rs. 1000/- Second time a fine of up to Rs. 3000/- Third time expulsion from the hostel.
3	Keeping arms, explosives, intoxicants, drugs or anything alike.	Fine up to a maximum of Rs. 10,000 and expulsion from the hostel.
4	Indulgence or participation in political, regional, ethnic, caste or sectarian based activities.	Fine up to a maximum of Rs. 10,000 and expulsion from the hostel.
5	Causing disturbance in the hostel by playing loud music, using fire crackers or by any other means.	Fine up to a maximum of Rs. 5000/-
6	Playing games in the hostel corridors or lawns.	Fine up to a maximum of Rs. 1000/-
7	Sleeping in the prayer hall, common room or study room.	Fine up to a maximum of Rs. 1000/-
8	Misbehavior with hostel staff, hostel administration or other fellow students.	Fine up to a maximum of Rs. 10000/-
9	Pasting posters/notices, wall chalking etc. without prior permission of the hostel warden.	Fine up to a maximum of Rs. 5000/- and or expulsion from the hostel.
10	Damage/theft or misuse of hostel property.	Recovery of loss and Fine up to a maximum of Rs. 10000/- and or expulsion from the hostel.
11	Subletting of the hostel seat or room to outsiders.	Expulsion from the hostel and a fine of Rs. 50,000/-
12	Willful absence from the hostel Correction and Reform Committee meeting by a student.	For the first time a fine of Rs. 5000/- For the second time a fine Rs. 10000/- and expulsion from the hostel.

HOSTEL DUES

Hostel dues can be changed by the college authorities from time to time. Hostel dues for the year 2017-2018 (till further orders) are as following:

S. No.	Particulars	Charges
Government dues		
1	Hostel admission fee	Rs. 700/-a
2	Room rent	Rs. 500/-a
3	Service charges	Rs. 500/-a
4	Electricity charges	Rs. 2000/-a
Hostel Dues		
1	Contingency charges	Rs. 800/-a
2	Common room charges	Rs. 500/-a
3	Miscellaneous charges	Rs. 2500/-a
4	Mess charges	As per actual expenses.
5	Hostel security(refundable)	Rs. 800/- once at the time of hostel admission
6	Sui gas charges	As per consumption.
7.	Generator Maintenance/FuelCharges	Rs. 4000/-a

DISCIPLINE

Every student and the parent/guardian of the students at the time of admission into the college shall give the following undertaking:

UNDERTAKING/AGREEMENT

(To be filled by the candidate on Judicial Bond of Rs. 35/- and duly attested by the Political Agent/First Class Magistrate).

1. Mr./Miss _____ Son/Daughter of _____
resident of _____

do hereby solemnly undertake to abide by the following:

- i) That I have read the Admission policy for Khyber Pakhtunkhwa Medical/Dental Colleges and Prospectus of medical/ dental colleges and hereby agree to conform to all provisions of the statutes of the college or statutes and rules as may hereafter be framed by the appropriate authorities.
- ii) That the information furnished in, and documents attached with the application form are correct, and I fully understand that at any time during course of study, if it is found that any information is incorrect or any documents produced at the time of admission are false, which would have rendered me ineligible for admission under the rules, my name shall immediately be struck off from the college roll and legal proceedings started against me.
- iii) That I shall, in case my name is struck off under clause (ii) above not be entitled to claim refund of any fee paid by me. In addition I shall pay to the Principal as liquidated damages @ Rs. 100,000 (One Hundred Thousand) per year of my studies in Khyber Pakhtunkhwa Medical/Dental Colleges.
- iv) That I shall have minimum attendance of 75%, diligently apply myself to acquire and develop the skill necessary for the practice and advancement of my study in order to qualify for the examination and will not be promoted to the next higher class unless cleared all the subjects.
- v) That I shall maintain identity as a student of College by wearing college uniform. I shall participate fully and wholeheartedly in games and co-curricular activities.
- vi) The hostel accommodation/Government jobs will be provided subject to availability, in case of non-availability of government jobs/hostel accommodation I will not ask for any job/accommodation.
- vii) That I will not indulge in politics of any type and will not be a member of any political party/ organization/ student federation and holding a gathering, meeting or taking out procession in any part of Campus, I understand that my failure to observe this clause of undertaking shall result in cancellation of my admission/expulsion from the college, and that the decision of the Principal in this regard will not be challenged in any Court of Law except the Supreme Court of Pakistan.
- viii) That I shall never use violence, threat of violence and pressure in any dispute with others, all means and methods shall only be logic, persuasion, petition, appeal, revision, review and other legal peaceful methods for settlement of differences and disputes.
- ix) That in any disputes with me, teachers and employees of the College I shall accept the decision of the committee constituted by the Principal/Government for settlement of the wrong doers.
- x) Further, I do hereby solemnly undertake to refrain from:
 - a) Doing anything, which may cause injury or insult to head, teacher, officers and staff of the Institution.
 - b) Holding a gathering, meeting or taking out procession in any part of Campus other than those areas specified for the purpose.
 - c) Allowing or abetting the entry to the premises of the College of expelled students, anti-social elements or others whose presence in the Campus could cause conflict amongst the students.
 - d) Bringing into the Campus, consuming or encouraging consumption of alcoholic products, drugs, and narcotics and indulging in acts of moral turpitude.
 - e) Bringing or keeping any type of weapons within the University/College Premises.

- f) Using or occupying any room or part of any building of the Institution without Lawful authority.
- g) Subletting my hostel room to unauthorized persons.
- h) Damaging any University/College property including building, equipment, vehicles etc. in any manner.
- i) Indulging in any violence or any other unsuitable activities even outside the campus of Medical/Dental Colleges which may bring bad name of the college.
- j) From all such acts and deeds as might bring disgrace and bad name to the college.

xi) In case I am reported to be guilty/involved in any of the aforesaid activities during my stay in medical college, the college authority can rusticate me from the college temporarily or expel me permanently I will not try to create law and order situation or instigate the students of the college or of any other institution against the action taken by the college. In case of my expulsion from the college I shall pay to the Principal as liquidated damages at the rate of Rs. 100,000 (One hundred thousand) per year of my study in the college.

xii) If it is reported that I have not honoured the decision of the College authorities as described above, I shall be liable to pay Rs. 200,000 (Two hundred thousand) per year of my study in the college as damages to the Government of Khyber Pakhtunkhwa.

xiii) In case there is any dispute between me on one hand and administration of the Medical College on the other hand regarding my involvement in the disciplinary or political matter or regarding the imposition on any penalty or damages on me, the matter shall be referred to the Principal, as the sole arbitrator and his decision in such capacity shall be final and shall not be called in question in any court of law.

xiv) That I will abide by the decision of the College Authorities in case I am found guilty of indiscipline, defamation, disrespect of the Teachers/ staff and other anti-institutional activities.

xv) I understand that **If it is found that I was not entitled for admission according to the Khyber Pakhtunkhwa Medical & Dental colleges admission policy at any stage of MBBS/BDS course OR if it is found that I was not entitled for admission in preference to the other candidates who applied for admission at any stage of MBBS/BDS course, my admission will stand cancelled.**

xvi) I solemnly declare that I do not have Double Domicile Certificate.

(Signature of the student)

Full Name _____

Father's Name _____

National Identity Card Number _____

Permanent Address _____

Dated _____ 2018.

TO BE FILLED BY FATHER/GUARDIAN OF THE CANDIDATE

I _____ son/daughter/wife of _____ and Mother/Father/Guardian of _____ hereby fully endorse, the undertaking given by my son/daughter/ward and assure that he/she will abide by this undertaking during his/her stay in the College.

i) I also make myself liable to pay Rs. 1,00,000 (One hundred thousand) per year of his/her study in the college in case of any breach of the above mentioned undertaking by my son/daughter/ward, Mr./Miss _____.

ii) I _____ Father/Mother/Guardian of Mr./Miss _____ assure that my son/daughter/ward will not indulge in politics of any type and will not be a member of any political party/ organization/students Federation nor will he/she attend any meeting which may result into his/her expulsion from the college, and that the decision of the Principal in this regard will be final.

Witness-1 _____
(Signature)

Full Name _____

Father's Name _____

National Identity Card No. _____

Present Address _____

Permanent Address _____

Deponent

Signature of the Father/Guardian of the student

Full Name _____

Father's Name _____

National Identity Card No. _____

Present Address _____

Permanent Address _____

Witness-2 _____
(Signature)

Full Name _____

Father's Name _____

National Identity Card Number _____

Present Address _____

Permanent Address _____

ATTESTED

Signature and Stamp of
Political Agent/First Class Magistrate

**AFFIDAVIT FOR GUARDIANSHIP
(TO BE PRODUCED ON STAMP PAPER)**

I _____ Son/Daughter/Wife of _____
hereby solemnly declare that my father has died in year _____ and _____
is my guardian.

(Signature of Guardian)

Name of Guardian _____

National Identity Card Number Guardian _____

Telephone Number

Land Line _____ Mobile. _____

(Signature of the applicant)

Name of Candidate _____

National Identity Card Number Candidate _____

Telephone Number

Land Line _____ Mobile. _____

AUTHORITY LETTER

I Mr./Miss _____ S/D/O _____

hereby authorize Mr./Miss _____
National Identity Card Number _____ to deposit my application form for Admission for the
Session 2018-2019. My as well as his/her specimen signatures are given below:

Name of Depositor _____

Signature of Depositor _____

Telephone Number

Land Line _____ Mobile. _____

Signature of candidate _____

Telephone Number

Land Line _____ Mobile. _____

ATTESTED BY
Gazetted Officer

DISABILITY CERTIFICATE

It is certified that Mr./Miss _____ S/D/o _____ is suffering from _____. It is certified that his/her disability is a **permanent** condition. It is further certified that his/ her disability puts him/ her at disadvantage as compared to a normal person for acquiring education before entering Medical/ Dental College, but otherwise he/she is **capable of performing his/her duties satisfactorily** as a Medical Practitioner. It is further certified that his/ her disability is **not of such a severe degree** that makes him/her unable to acquire medical education or work as doctor. Moreover I certify that at present he/she is **mentally fit and physically able** to carry on studies and perform professional duties after qualifying MBBS/BDS.

(Full Signature)

(To be signed by certified specialist in the relevant field in the Government Hospitals).

Name of the Consultant _____

Designation _____

Specialty _____

Qualification _____

Present Place of Posting _____

Official Stamp bearing name, Designation and Place of Duty.

Date _____

CERTIFICATE OF LOCATION OF EDUCATIONAL INSTITUTES

(To be submitted by the candidates applying against Backward Areas and FATA inner seats)

Office of District Executive Officer (Education) District/Agency/FR: _____

certified that Mr./Ms. _____ has

S/o, D/o _____ as follows:

been studying in the District/Agency/FR of _____

Class	Full Name of School/College	Location of School/College	INSIDE / OUTSIDE	Year (From-To -)	Board
Primary (1-5)					
Middle (6-8)					
Matric (9-10)					
F.Sc Part-I (11)					
F.Sc Part-II (12)					

Signature of DEO (Education)
with official stamp

Verified by the DC of concerned District/FR or PA of Agency

DC/PA _____
With official stamp

CERTIFICATE OF NON-EXISTENCE OF EDUCATIONAL INSTITUTES

(To be submitted by the candidates applying against Backward Area Inner seats claiming for non-existence of complete education or part of education in that respective Backward Area)

It is certified that Mr./Ms. _____
S/o, D/o _____
had NO educational institutes/facility for (Primary(1-5)/ Middle (6-8)/Matric (9-10) /FSc-I (11)/FSc-II (12)
_____ existed for (Male/Female) _____ in
the Tehsil / Distt of the Backward Area of _____ in the Session _____.

Signature of DEO (Education)
with official stamp

Verified by the DC of concerned District

DC _____
With official stamp

PROFORMA FOR MIGRATION

Name of candidate	Fathers Name	Present institute NOC	Session and class	Institution to which migrating NOC	Current DMC	Category of seat	Merit amongst migrating candidates

Note:

- Ten (10) marks are deducted for each additional attempt.
- Self-Finance and Reserved Quota students can not apply for migration.
- Merit will be determined on the basis of marks obtained in the last professional examination cleared.
- In case of a tie, merit will be determined by the immediate previous exam marks of the candidate.